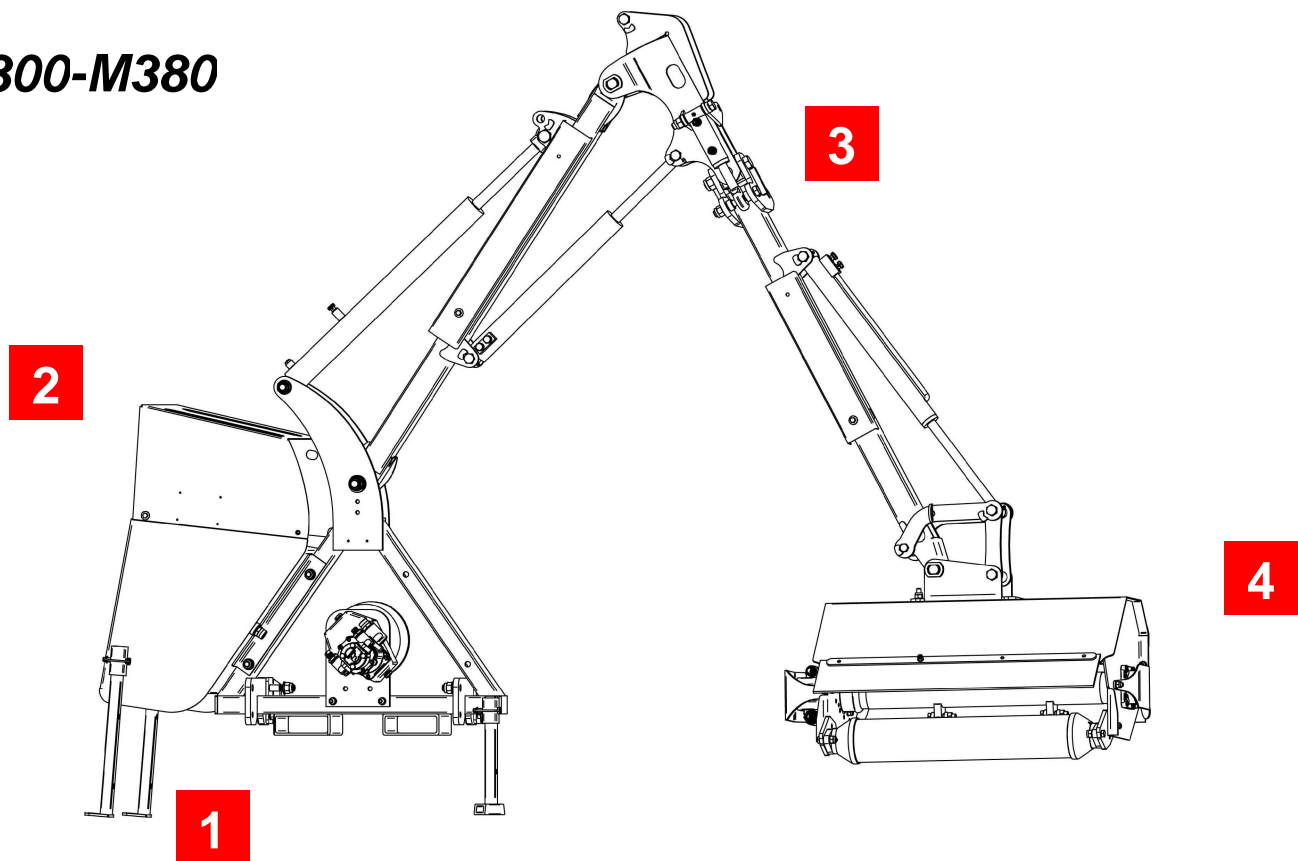
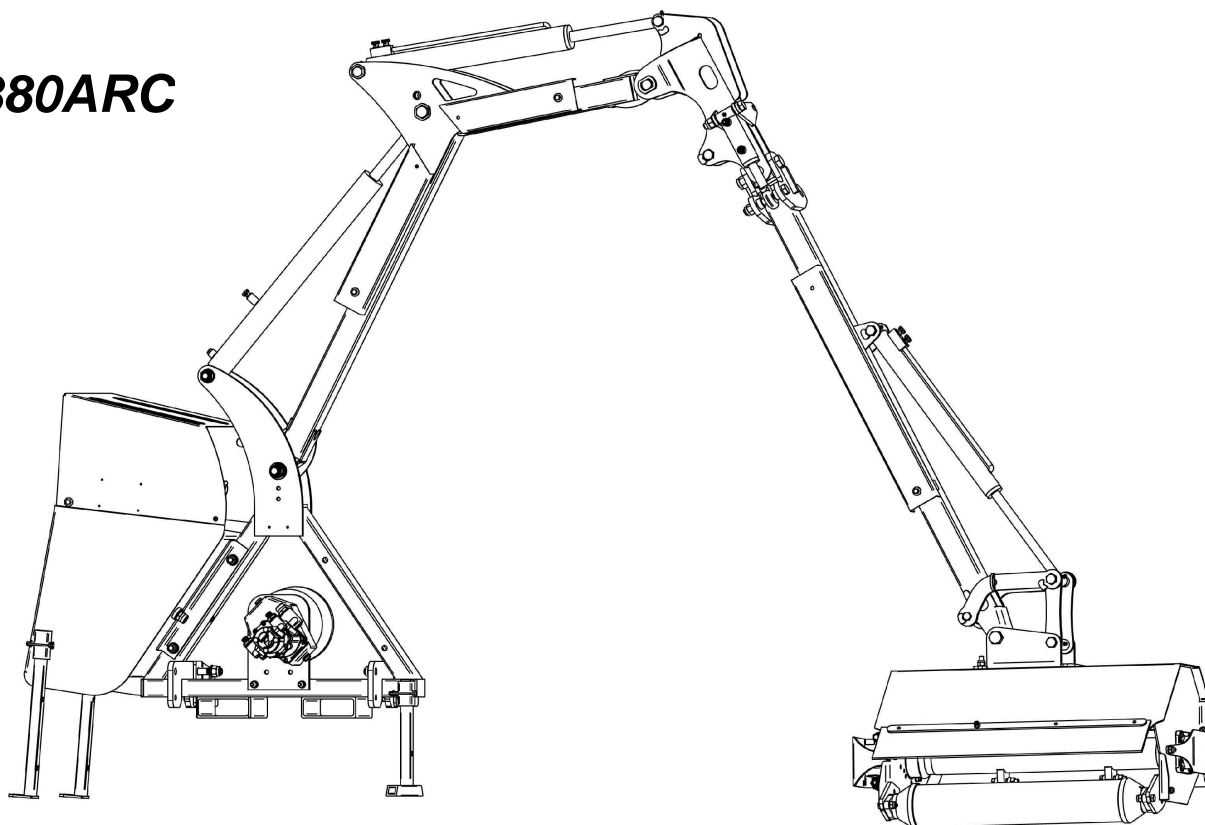


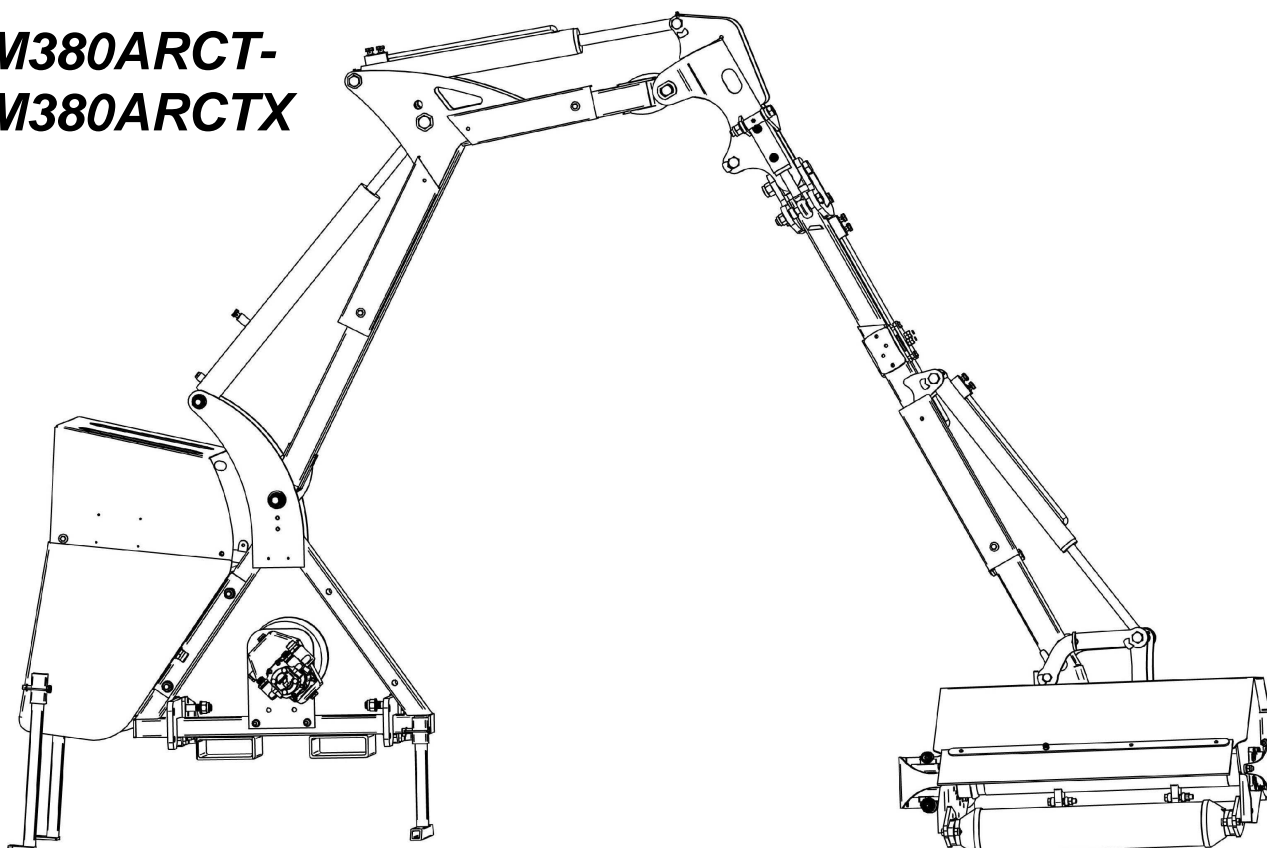
**M300-M380**



**M380ARC**

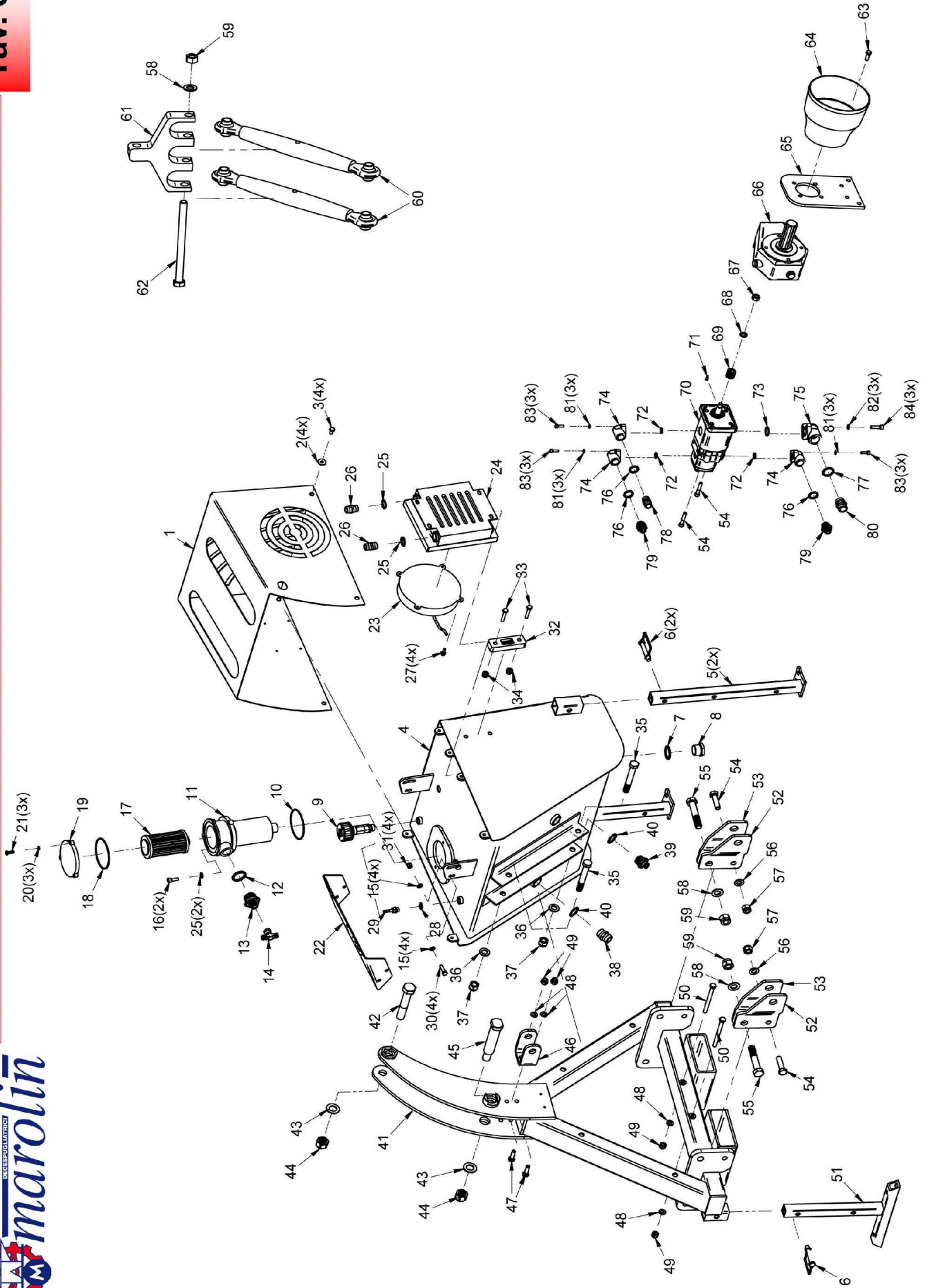


**M380ARCT-  
M380ARCTX**



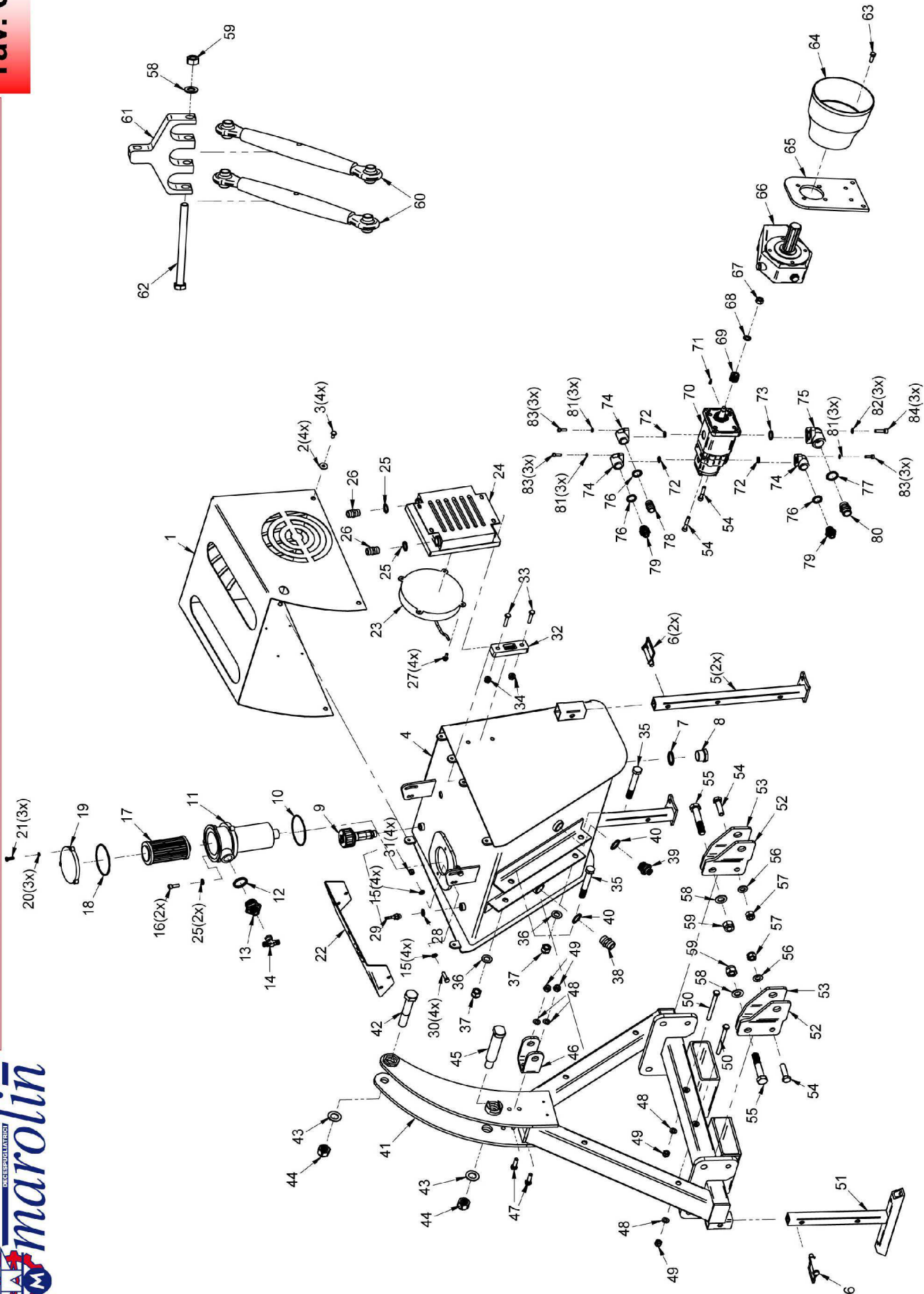
**INDICE:**

Tav.1	TELAIO/FRAME/RAHMEN/CHASSIS.....	pag.3
Tav.2	COMANDI IDRAULICI/DISTRIBUTORS/STEVERGERATE/ DISTRIBUTEURS.....	pag.11
Tav.3	BRACCI/ARMS/ARME/BRAS.....	pag.23
Tav.5	IMPIANTO IDRAULICO/HIDRAULIC SYSTEM/ HYDRAULIKANLAGE/INSTALLATION HIDRAULIQUE .....	pag.29
Tav.6	OPTIONALS .....	pag.33

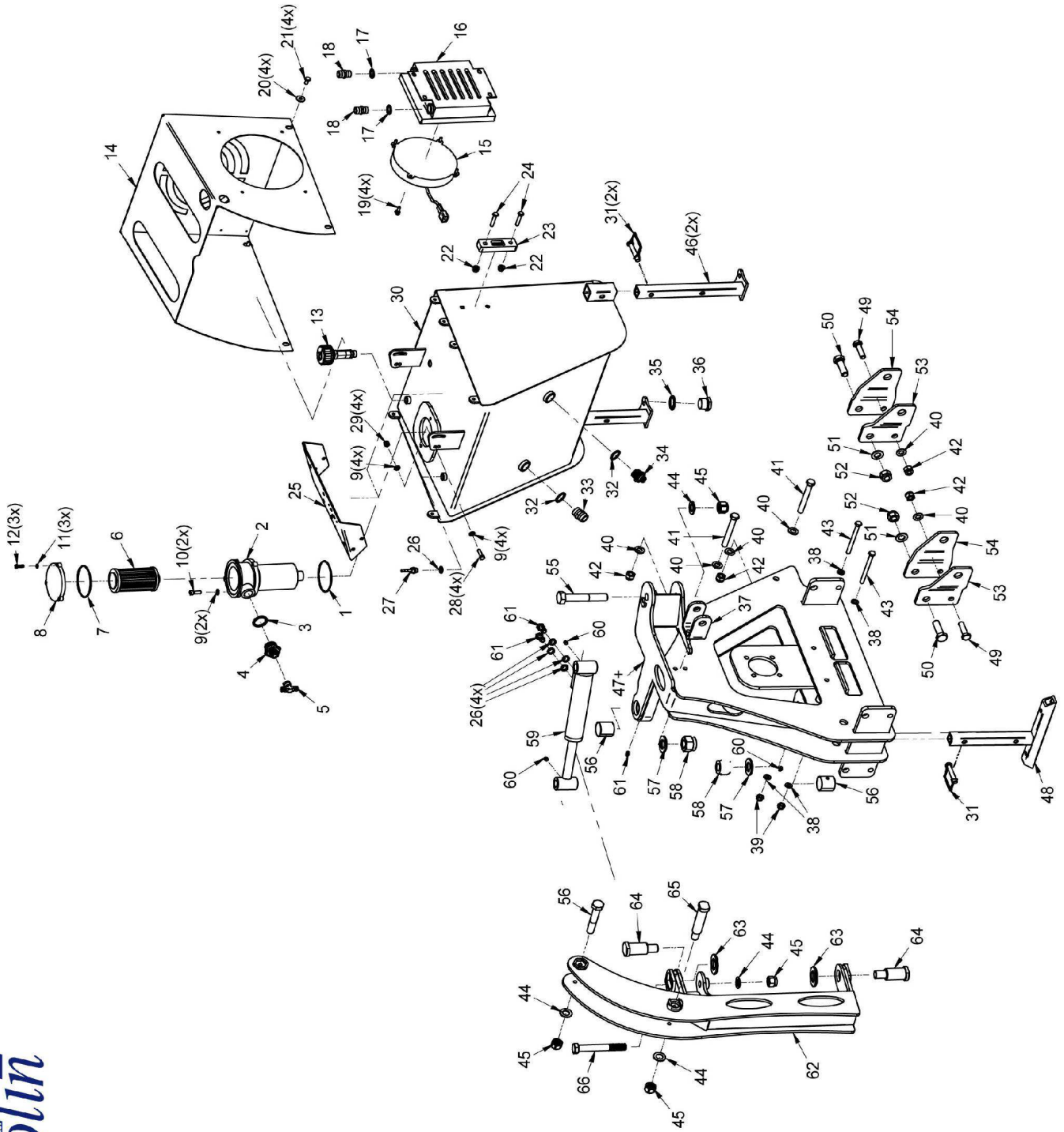


Nr.	Cod.	Q.ty	Tappo - Plug - Stecker - Fiche
1	MT02-064	1	Cofano - Tank lid - Tankdeckel - Couvercle du réservoir
2	V08-002	4	Rondella - Washer - Scheibe - Rondelle
3	V08-000	4	Vite - Bolt - Schraube - Vis
4	MT02-141	1	Serbatoio olio - Oil tank - Öltank - Réservoir d'huile
5	MT02-042	2	Piede di supporto - Support foot - Stützfuß - Pied de support
6	P03-007	3	Spina - Pin - Stift - Fiche
7	P08-031	1	Rondella - Washer - Scheibe - Rondelle
8	P08-095	1	Tappo - Plug - Stecker - Branchez
9	P04-005	1	Sfiato - Breather pipe - Entlüftung - Event
10	P08-048	1	Guarnizione - Gasket - Dichtung - Joint
11	P03-045	1	Filtro - Filter - Filter - Filtre
12	P08-031	1	Rondella - Washer - Scheibe - Rondelle
13	P08-018	1	Riduzione - Nipple - Nippel - Adaptateur
14	P08-050	1	Raccordo - Fitting - Anschluss - Raccord
15	V08-001	10	Rondella - Washer - Scheibe - Rondelle
16	V08-005	2	Vite - Bolt - Schraube - Vis
17	P03-044	1	Cartuccia - Cartridge - Filterensatz - Cartouche
18	P08-049	1	Guarnizione - Gasket - Dichtung - Joint
19	P03-046	1	Coperchio - Cover - Abdeckung - couvercle
20	V06-002	3	Rondella - Washer - Scheibe - Rondelle
21	V06-001	3	Vite - Bolt - Schraube - Vis
22	MT02-005	1	Supporto distributore - Distributor support - Verteilerhalter - Support distributeur
23	P03-022	1	Ventola - Fan - Fan - Ventilateur
	P03-024	1	Ventola - Fan - Fan - Ventilateur [M300 S] _ (pag. 33)
24	P03-021	1	Scambiatore calore - Oil cooler - Ölkühler - Refroidisseur d'huile
	P03-023	1	Scambiatore calore - Oil cooler - Ölkühler - Refroidisseur d'huile [M300 S] _ (pag.33)
25	P08-029	2	Rondella - Washer - Scheibe - Rondelle
26	P08-012	2	Riduzione - Nipple - Nippel - Adaptateur
27	V06-000	4	Vite - Bolt - Schraube - Vis
28	P08-028	1	Rondella - Washer - Scheibe - Rondelle
29	P08-094	1	Raccordo diritto - Straight fitting - Gerader Anschluss - Raccord droit
30	V08-003	4	Vite - Bolt - Schraube - Vis
31	V08-020	4	Dado - Nut - Mutter - Erou
32	P03-056	1	Livello olio - Oil level - Oil level - Niveau d'huile
33	V08-019	2	Vite - Bolt - Schraube - Vis
34	V08-013	2	Dado - Nut - Mutter - Erou
35	V16-012	2	Vite - Bolt - Schraube - Vis
36	V16-004	2	Rondella - Washer - Scheibe - Rondelle
37	V16-006	2	Dado - Nut - Mutter - Erou
38	P08-015	1	Riduzione - Nipple - Nippel - Adaptateur
39	P08-017	1	Riduzione - Nipple - Nippel - Adaptateur
40	P08-030	2	Rondella - Washer - Scheibe - Rondelle
41	MT02-032	1	Telaio - Frame - Rahmen - Châssis
42	V22-007	1	Vite - Bolt - Schraube - Vis
43	V22-003	2	Rondella - Washer - Scheibe - Rondelle
44	V22-008	2	Dado - Nut - Mutter - Erou



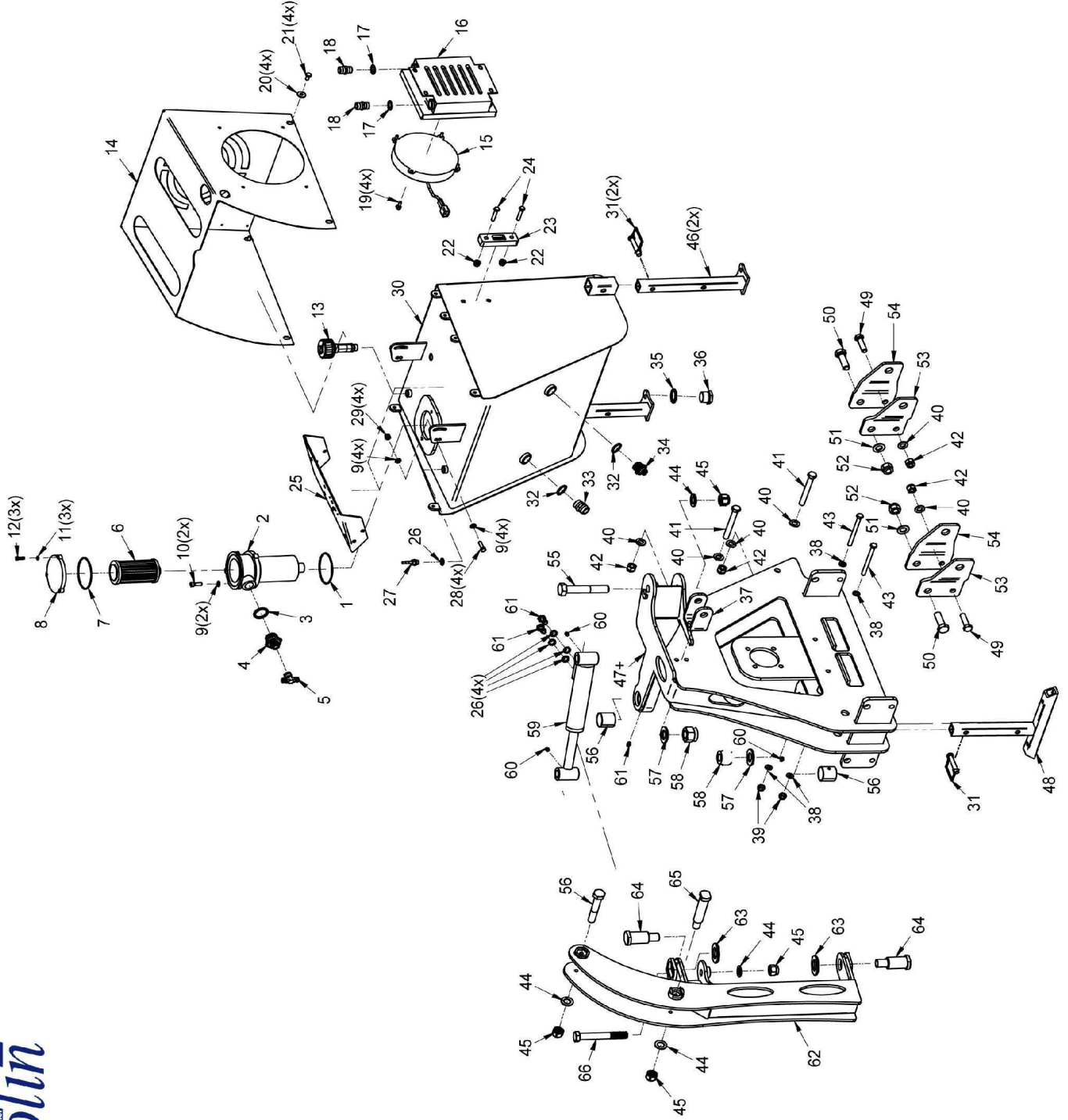


Nr.	Cod.	Q.ty	Tappo - Plug - Stecker - Fiche
45	MT02-022	1	Spina - Pin - Stift - Fiche
46	MT02-041	1	Attacco 3° punto - 3rd point fitting - Dreipunktanschluss - Attelage 3ème point
47	V10-001	2	Vite - Bolt - Schraube - Vis
48	V10-003	4	Rondella - Washer - Scheibe - Rondelle
49	V10-008	4	Dado - Nut - Mutter - Ecrou
50	V10-002	2	Vite - Bolt - Schraube - Vis
51	MT02-142	1	Piede di supporto - Support foot - Stützfuß - Pied de support
52	MT01-016	2	Attacco - Linkage - Anschluss - Attelage
53	MT01-104	2	Attacco - Linkage - Anschluss - Attelage
54	V14-001	2	Vite - Bolt - Schraube - Vis
55	V18-011	2	Vite - Bolt - Schraube - Vis
56	V14-004	2	Rondella - Washer - Scheibe - Rondelle
57	V14-005	2	Dado - Nut - Mutter - Ecrou
58	V18-001	3	Dado - Nut - Mutter - Ecrou
59	V18-003	3	Dado - Nut - Mutter - Ecrou
60	P03-064	2	Tirante di bloccaggio - Securing tie-bar - Klemmzugstange - Tirant de blocage
61	P07-004	1	Attacco - Linkage - Anschluss - Attelage
62	V18-004	1	Vite - Bolt - Schraube - Vis
63	V10-000	2	Vite - Bolt - Schraube - Vis
64	P03-062	1	Cuffia - Hood - Haube - Soufflet
65	MT02-013	1	Piastra - Plate - Platte - Plate
66	P03-059	1	Moltiplicatore - Gear box - Getriebe - Multiplicateur
67	V12-003	1	Dado - Nut - Mutter - Ecrou
68	V12-009	1	Rondella - Washer - Scheibe - Rondelle
69	P03-061	1	Ingranaggio - Gear - Zahnrad - Engrenage
70	P03-060	1	Pompa - Pump - Pumpe - Pompe
71	P08-007	1	Linguetta - Tongue - Keil - Clavette
72	P08-000	3	Guarnizione - Gasket - Dichtung - Joint
73	P08-001	1	Guarnizione - Gasket - Dichtung - Joint
74	P08-005	3	Flangia - Flange - Flansch - Flasque
75	P08-004	1	Flangia - Flange - Flansch - Flasque
76	P08-029	3	Rondella - Washer - Scheibe - Rondelle
77	P08-030	1	Rondella - Washer - Scheibe - Rondelle
78	P08-012	1	Riduzione - Nipple - Nippel - Adapteur
79	P08-020	2	Riduzione - Nipple - Nippel - Adapteur
80	P08-015	1	Riduzione - Nipple - Nippel - Adapteur
81	V06-005	9	Rondella - Washer - Scheibe - Rondelle
82	V08-011	3	Rondella - Washer - Scheibe - Rondelle
83	V06-004	9	Vite - Bolt - Schraube - Vis
84	V08-006	3	Vite - Bolt - Schraube - Vis

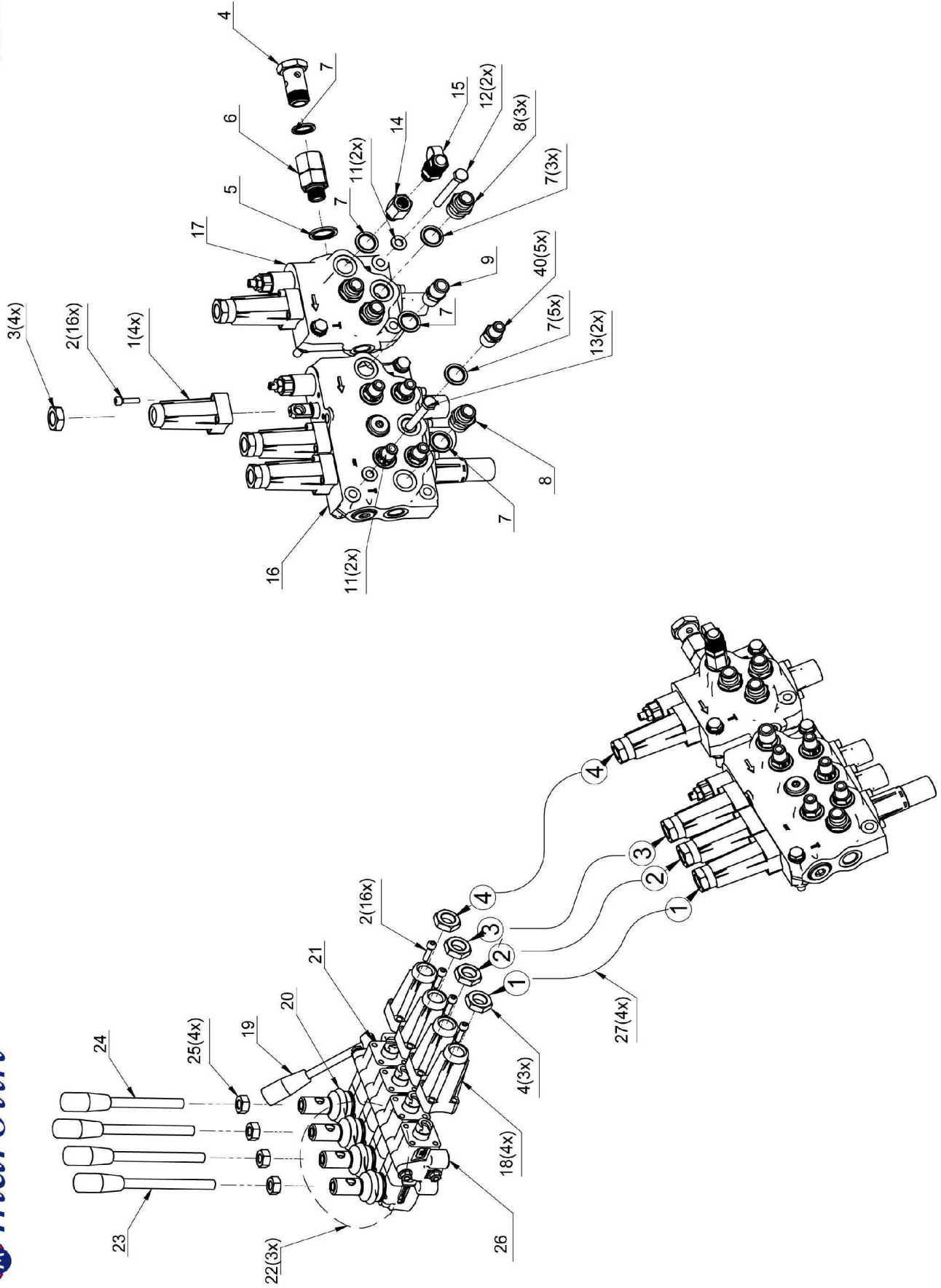


Nr.	Cod.	Q.ty	Tappo - Plug - Stecker - Fiche
1	P08-048	1	Guarnizione - Gasket - Dichtung - Joint
2	P03-045	1	Filtro - Filter - Filter - Filtre
3	P08-031	1	Rondella - Washer - Scheibe - Rondelle
4	P08-018	1	Riduzione - Nipple - Nippel - Adapteur
5	P08-050	1	Raccordo - Fitting - Anschluss - Raccord
6	P03-044	1	Cartuccia - Cartridge - Filterensatz - Cartouche
7	P08-049	1	Guarnizione - Gasket - Dichtung - Joint
8	P03-046	1	Coperchio - Cover - Abdeckung - couvercle
9	V08-001	10	Rondella - Washer - Scheibe - Rondelle
10	V08-005	2	Vite - Bolt - Schraube - Vis
11	V06-002	3	Rondella - Washer - Scheibe - Rondelle
12	V06-001	3	Vite - Bolt - Schraube - Vis
13	P04-005	1	Sfiato - Breather pipe - Entlüftung - Event
14	MT02-062	1	Cofano - Tank lid - Tankdeckel - Couvercle du réservoir
15	P03-022	1	Ventola - Fan - Fan - Ventilateur
	P03-024	1	Ventola - Fan - Fan - Ventilateur [M300 S] _ (pag. 33)
16	P03-021	1	Scambiatore calore - Oil cooler - Ölkühler - Refroidisseur d'huile
	P03-023	1	Scambiatore calore - Oil cooler - Ölkühler - Refroidisseur d'huile [M300 S] _ (pag.33)
17	P08-029	2	Rondella - Washer - Scheibe - Rondelle
18	P08-012	2	Riduzione - Nipple - Nippel - Adapteur
19	V06-000	4	Vite - Bolt - Schraube - Vis
20	V08-002	4	Rondella - Washer - Scheibe - Rondelle
21	V08-000	4	Vite - Bolt - Schraube - Vis
22	V08-013	2	Dado - Nut - Mutter - Erou
23	P03-056	1	Livello oilo - Oil level - Oil level - Niveau d'huile
24	V08-019	2	Vite - Bolt - Schraube - Vis
25	MT02-005	1	Supporto distributore - Distributor support - Verteilerhalter - Support distributeur
26	P08-028	5	Rondella - Washer - Scheibe - Rondelle
27	P08-094	1	Raccordo diritto - Straight fitting - Gerader Anschluss - Raccord droit
28	V08-003	4	Vite - Bolt - Schraube - Vis
29	V08-020	4	Dado - Nut - Mutter - Erou
30	MT02-106	1	Serbatoio olio - Oil tank - Öltank - Réservoir d'huile
31	P03-007	3	Spina di sostegno - Support pin - Haltestift - Fiche de soutien
32	P08-030	2	Rondella - Washer - Scheibe - Rondelle
33	P08-015	1	Riduzione - Nipple - Nippel - Adapteur
34	P08-017	1	Riduzione - Nipple - Nippel - Adapteur
35	P08-031	1	Rondella - Washer - Scheibe - Rondelle
36	P08-095	1	Tappo - Plug - Stecker - Branchez
37	MT02-041	1	Attacco 3° punto - 3rd point fitting - Dreipunktanschluss - Attelage 3ème point
38	V10-003	4	Rondella - Washer - Scheibe - Rondelle
39	V10-008	2	Dado - Nut - Mutter - Erou
40	V14-004	6	Rondella - Washer - Scheibe - Rondelle
41	V14-002	2	Vite - Bolt - Schraube - Vis
42	V14-005	4	Dado - Nut - Mutter - Erou
43	V10-002	2	Vite - Bolt - Schraube - Vis
44	V12-003	4	Dado - Nut - Mutter - Erou

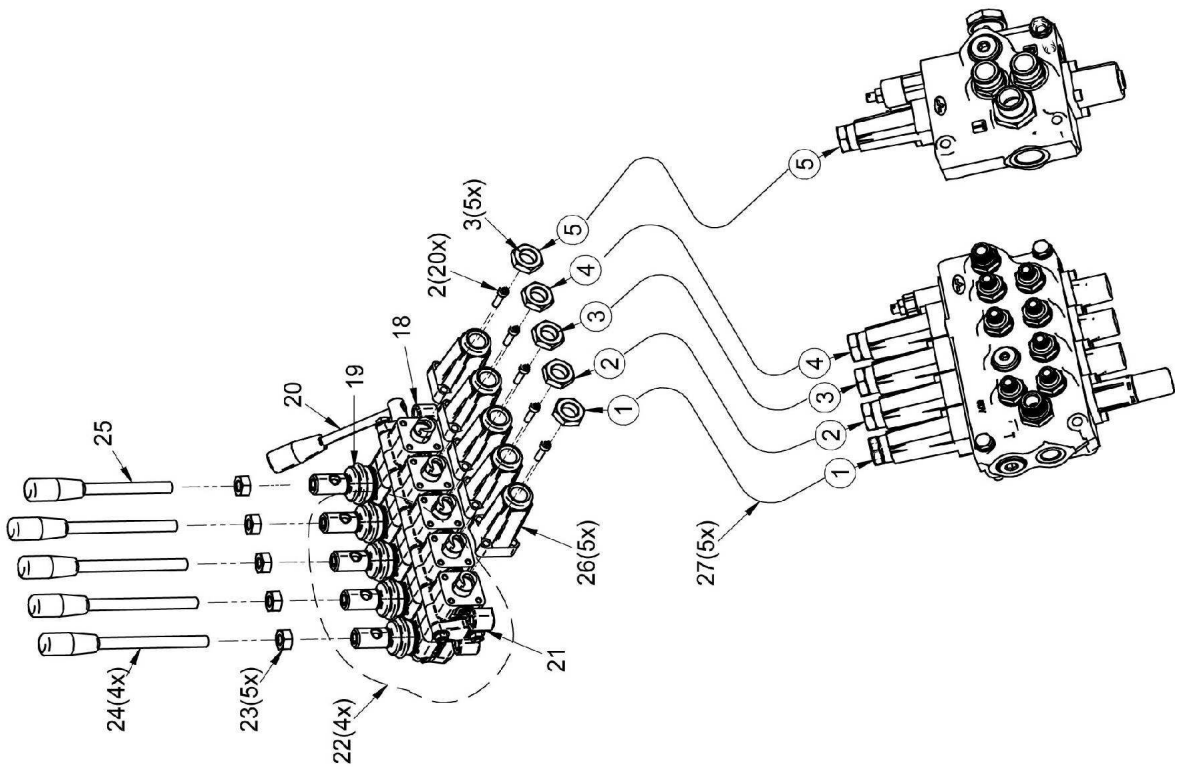
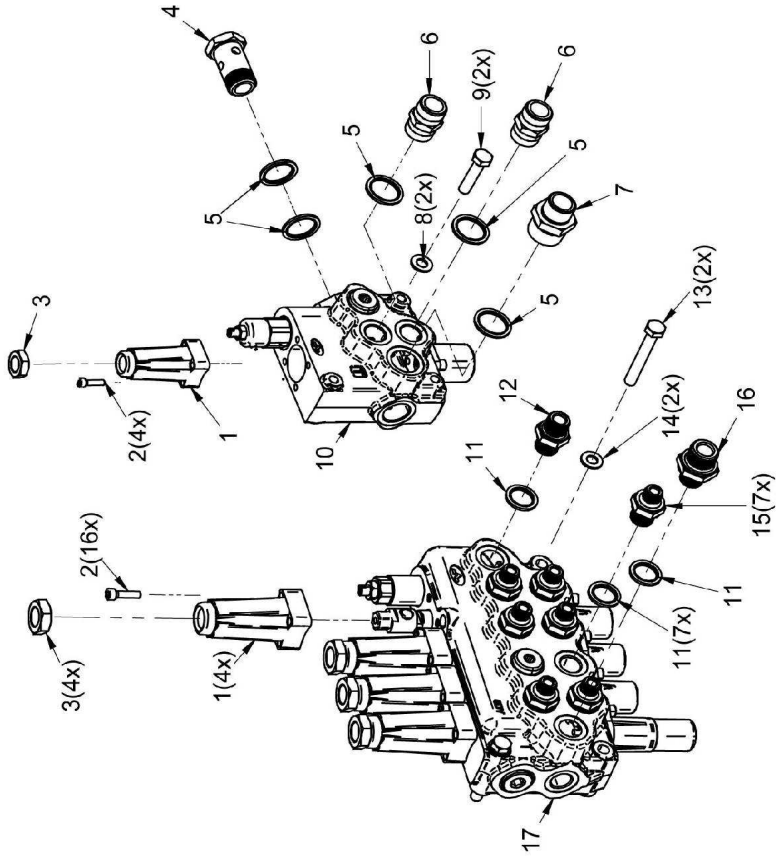




Nr.	Cod.	Q.ty	Tappo - Plug - Stecker - Fiche
45	V22-008	4	Dado - Nut - Mutter - Erou
46	MT03-042	2	Piede di supporto - Support foot - Stützfuß - Pied de support
47	MT02-117	1	Telaio - Frame - Rahmen - Châssis
48	MT03-043	1	Piede di supporto - Support foot - Stützfuß - Pied de support
49	V14-001	2	Vite - Bolt - Schraube - Vis
50	V18-000	2	Vite - Bolt - Schraube - Vis
51	V18-001	2	Rondella - Washer - Scheibe - Rondelle
52	V18-003	2	Dado - Nut - Mutter - Erou
53	MT01-016	2	Attacco - Linkage - Anschluss - Attelage
54	MT01-104	2	Attacco - Linkage - Anschluss - Attelage
55	V22-007	2	Vite - Bolt - Schraube - Vis
56	P02-129	2	Boccola - Bushing - Buchse - Bague
57	V27-001	2	Rondella - Washer - Scheibe - Rondelle
58	V27-000	2	Dado - Nut - Mutter - Erou
59	P06-046	1	Cilindro - Cylinder - Zylinder - Cylindre
60	P08-039	3	Ingrassatore - Grease nipple - Schmiernippel - Graisseur
61	P08-032	2	Vite cava - Hollow Screw - Hohlschraube - Vis creuse
62	MT02-131	1	Bandiera - Flag - Flagge - Drapeau
63	P02-139	2	Rondella - Washer - Scheibe - Rondelle
64	P03-124	2	Spina - Pin - Stift - Fiche
65	MT02-022	1	Spina - Pin - Stift - Fiche
66	V22-011	1	Rondella - Washer - Scheibe - Rondelle

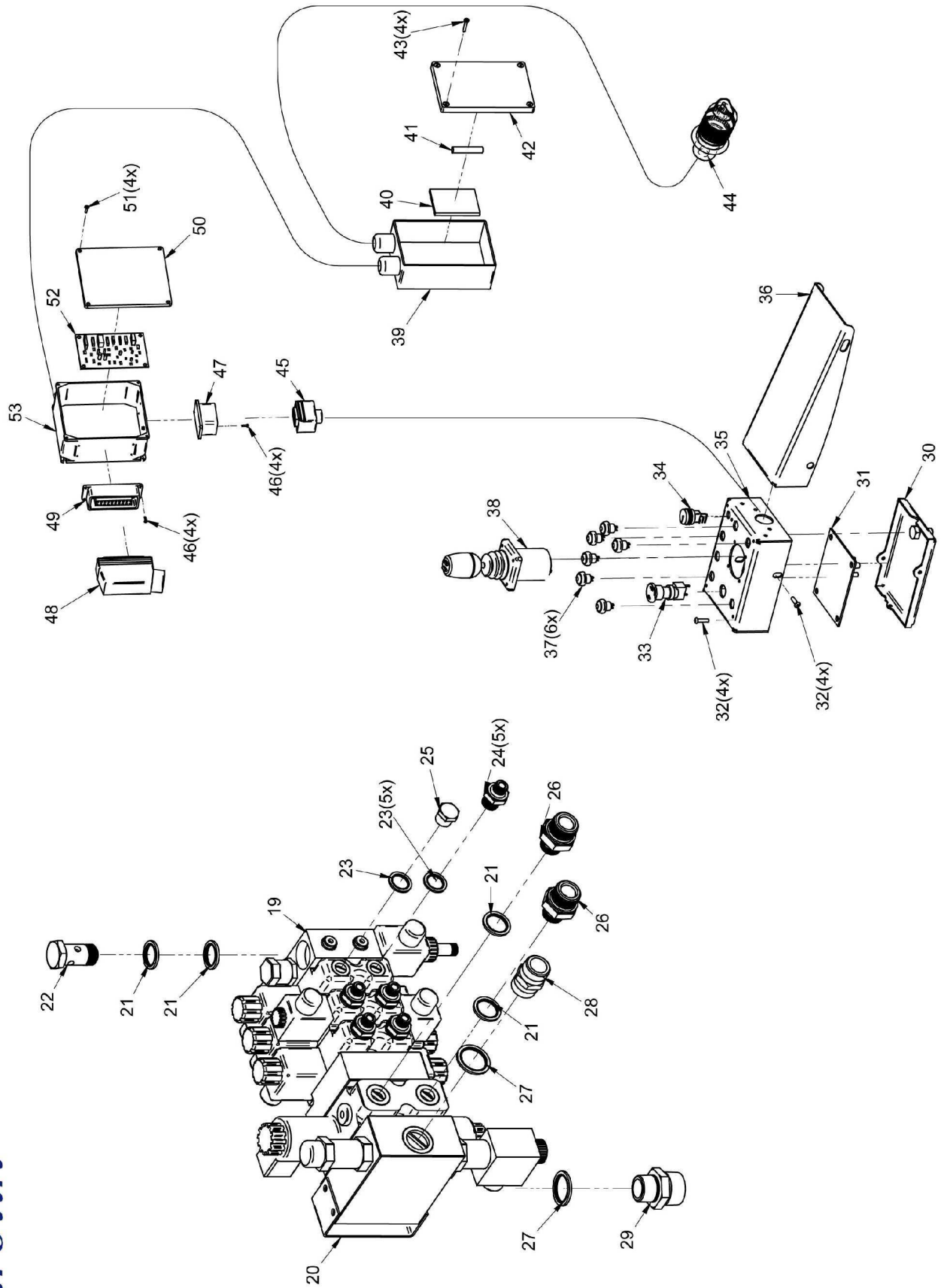


Nr.	Cod.	Item	Denominazione - Denomination - Bezeichnung - Denomination
1	P06-019	4	Cappellotto · Cap · Deckel · Capuchon
2	V05-000	32	Vite - Bolt - Schraube - Vis
3	V16-005	8	Dado - Nut - Mutter - Erou
4	P08-026	1	Vite forata - Screw holes - Schraubenlöcher - Trous de vis
5	P08-027	1	Rondella - Washer - Scheibe - Rondelle
6	P08-024	1	Prolunga · Extension · Verlaengerung · prolonge
7	P08-029	12	Rondella - Washer - Scheibe - Rondelle
8	P08-020	4	Nipplo - Nipple - Nippel - Niplo
9	P08-022	1	Nipplo - Nipple - Nippel - Niplo
10	P08-021	5	Nipplo - Nipple - Nippel - Niplo
11	V08-001	4	Rondella - Washer - Scheibe - Rondelle
12	V08-018	2	Vite - Bolt - Schraube - Vis
13	V08-017	2	Vite - Bolt - Schraube - Vis
14	P08-023	1	Prolunga · Extension · Verlaengerung · prolonge
15	P08-025	1	Minipresa - Minijack - Minianschluss - minijack
16	P03-019	1	Distributore - Control valve - Steuerblock - Distributeur
17	P03-018	1	Distributore - Control valve - Steuerblock - Distributeur
18	P03-158	4	Cappellotto · Cap · Deckel · Capuchon
19	P03-067	1	Leva - Lever - Hebel - levier de
20	P03-065	1	Distributore - Control valve - Steuerblock - Distributeur
21	P03-066	2	Supporto - Support - Unterstützung - support
22	P03-051	3	Distributore - Control valve - Steuerblock - Distributeur
23	P03-053	3	Leva - Lever - Hebel - levier de
24	P03-052	1	Leva - Lever - Hebel - levier de
25	V10-004	4	Dado - Nut - Mutter - Erou
26	P03-159	2	Supporto - Support - Unterstützung - support
27	P03-131	4	Cavo - Cable - Kabel - Câble

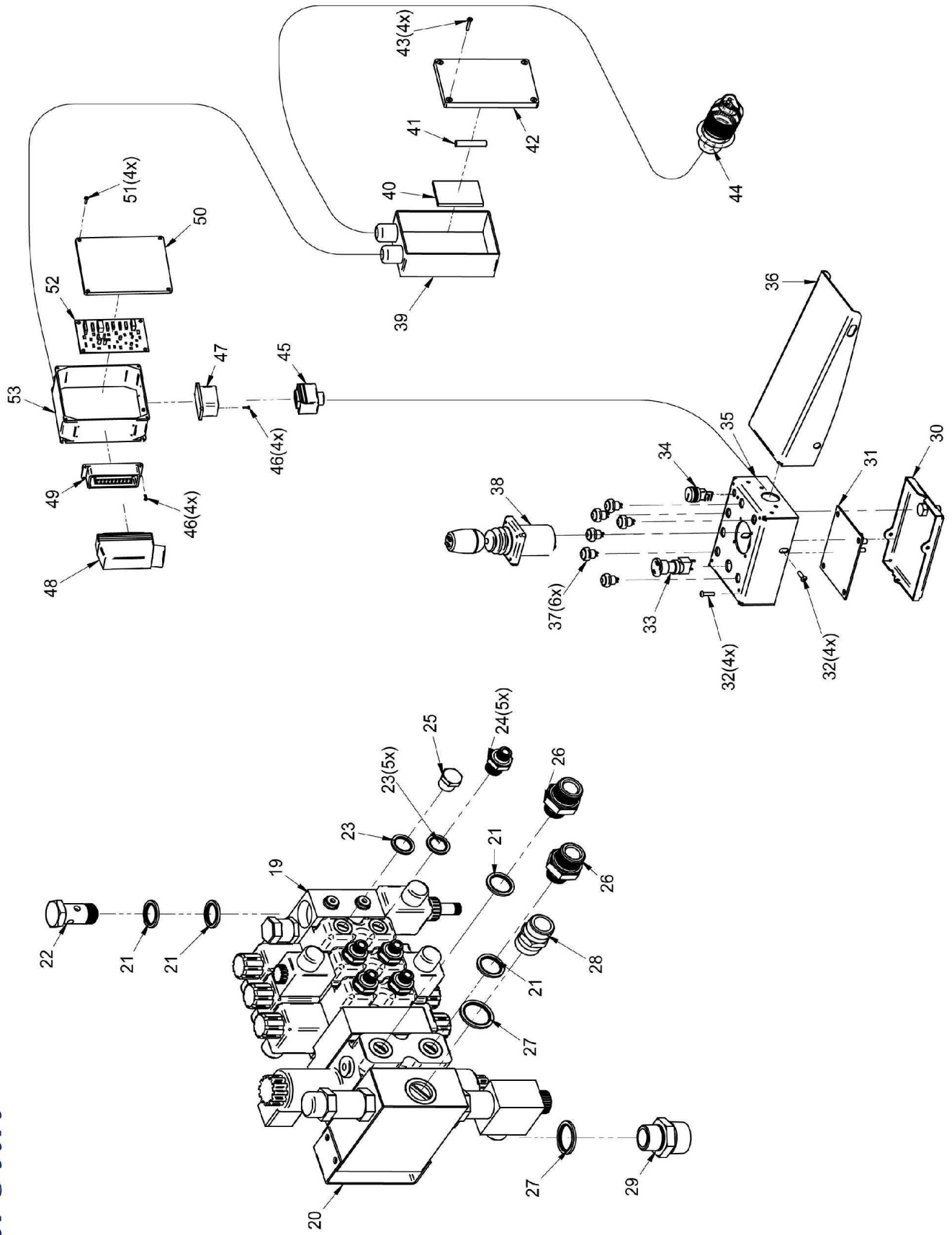




Nr.	Cod.	Item	Denominazione - Denomination - Bezeichnung - Denomination
1	P06-019	5	Cappellotto · Cap · Deckel · Capuchon
2	V05-000	40	Vite - Bolt - Schraube - Vis
3	V16-005	10	Dado - Nut - Mutter - Ecrou
4	P08-034	1	Vite forata - Screw holes - Schraubenlöcher - Trous de vis
5	P08-030	5	Rondella - Washer - Scheibe - Rondelle
6	P08-015	2	Nipplo - Nipple - Nippel - Niplo
7	P08-058	1	Nipplo - Nipple - Nippel - Niplo
8	V10-003	2	Rondella - Washer - Scheibe - Rondelle
9	V10-004	2	Vite - Bolt - Schraube - Vis
10	P03-175	1	Distributore - Control valve - Steuerblock - Distributeur
11	P08-027	9	Rondella - Washer - Scheibe - Rondelle
12	P08-022	1	Nipplo - Nipple - Nippel - Niplo
13	V08-017	2	Vite - Bolt - Schraube - Vis
14	V08-001	2	Rondella - Washer - Scheibe - Rondelle
15	P08-021	7	Nipplo - Nipple - Nippel - Niplo
16	P08-020	1	Nipplo - Nipple - Nippel - Niplo
17	P03-174	1	Distributore - Control valve - Steuerblock - Distributeur
18	P03-066	2	Supporto - Support - Unterstützung - support
19	P03-065	1	Distributore - Control valve - Steuerblock - Distributeur
20	P03-067	1	Leva - Lever - Hebel - levier de
21	P03-159	2	Supporto - Support - Unterstützung - support
22	P03-187	4	Distributore - Control valve - Steuerblock - Distributeur
23	V10-004	5	Dado - Nut - Mutter - Ecrou
24	P03-053	4	Leva - Lever - Hebel - levier de
25	P03-052	1	Leva - Lever - Hebel - levier de
26	P03-158	5	Cappellotto · Cap · Deckel · Capuchon
27	P03-131	5	Cavo - Cable - Kabel - Câble

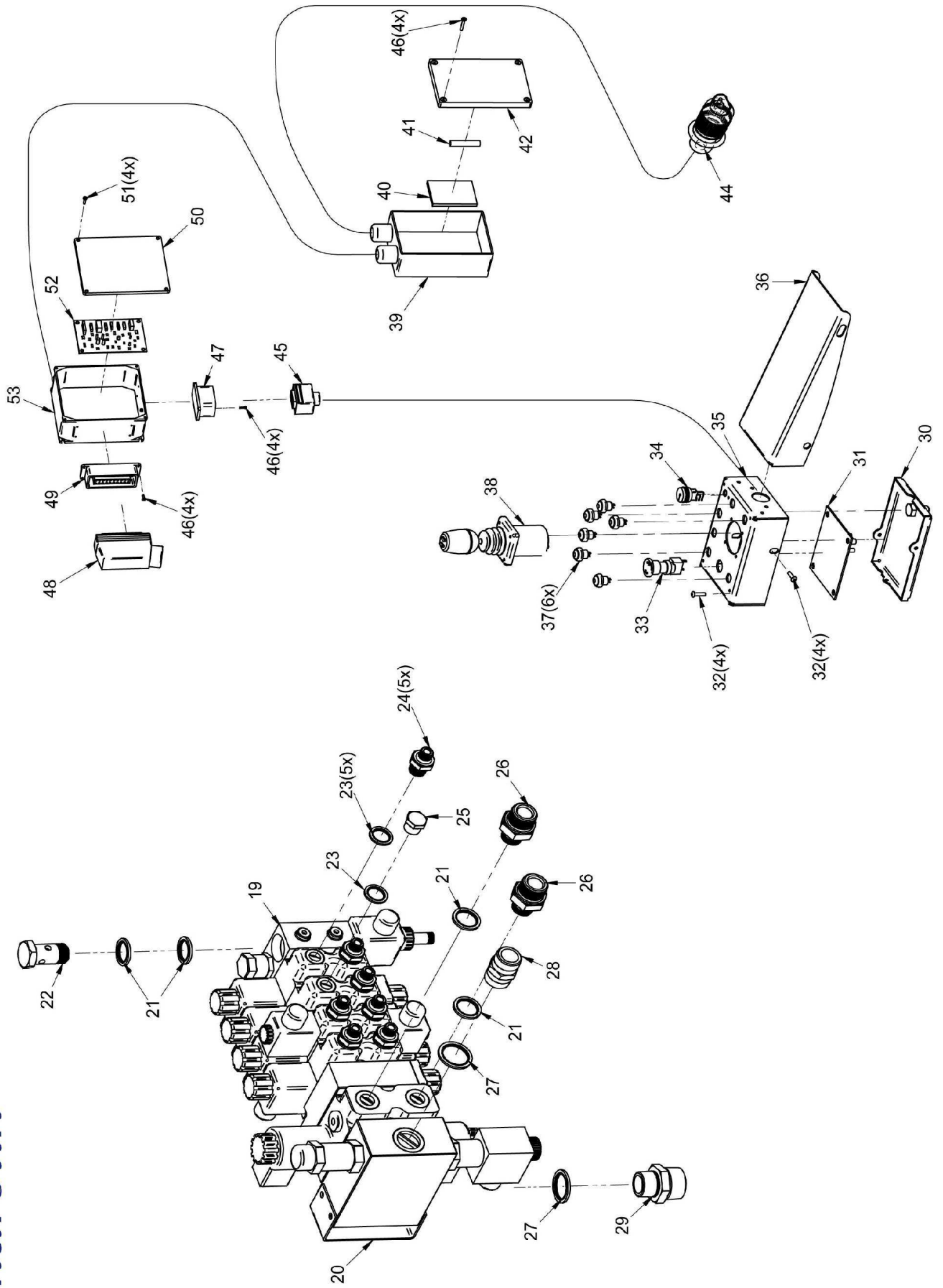


Nr.	Cod.	Item	Denominazione - Denomination - Bezeichnung - Denomination
1	P06-019	6	Cappellotto · Cap · Deckel · Capuchon
2	V05-000	44	Vite - Bolt - Schraube - Vis
3	V16-005	11	Dado - Nut - Mutter - Erou
4	P08-034	1	Vite forata - Screw holes - Schraubenlöcher - Trous de vis
5	P08-030	5	Rondella - Washer - Scheibe - Rondelle
6	P08-015	2	Nipplo - Nipple - Nippel - Niplo
7	P08-058	1	Nipplo - Nipple - Nippel - Niplo
8	V10-003	2	Rondella - Washer - Scheibe - Rondelle
9	V10-004	2	Vite - Bolt - Schraube - Vis
10	P03-175	1	Distributore - Control valve - Steuerblock - Distributeur
11	P08-027	10	Rondella - Washer - Scheibe - Rondelle
12	P08-022	1	Nipplo - Nipple - Nippel - Niplo
13	V08-017	2	Vite - Bolt - Schraube - Vis
14	V08-001	2	Rondella - Washer - Scheibe - Rondelle
15	P08-021	9	Nipplo - Nipple - Nippel - Niplo
16	P08-020	1	Nipplo - Nipple - Nippel - Niplo
17	P03-183	1	Distributore - Control valve - Steuerblock - Distributeur
18	P03-066	2	Supporto - Support - Unterstützung - support
19	P03-065	1	Distributore - Control valve - Steuerblock - Distributeur
20	P03-067	1	Leva - Lever - Hebel - levier de
21	P03-159	2	Supporto - Support - Unterstützung - support
22	P03-187	5	Distributore - Control valve - Steuerblock - Distributeur
23	V10-004	6	Dado - Nut - Mutter - Erou
24	P03-053	5	Leva - Lever - Hebel - levier de
25	P03-052	1	Leva - Lever - Hebel - levier de
26	P03-158	6	Cappellotto · Cap · Deckel · Capuchon
27	P03-131	6	Cavo - Cable - Kabel - Câble

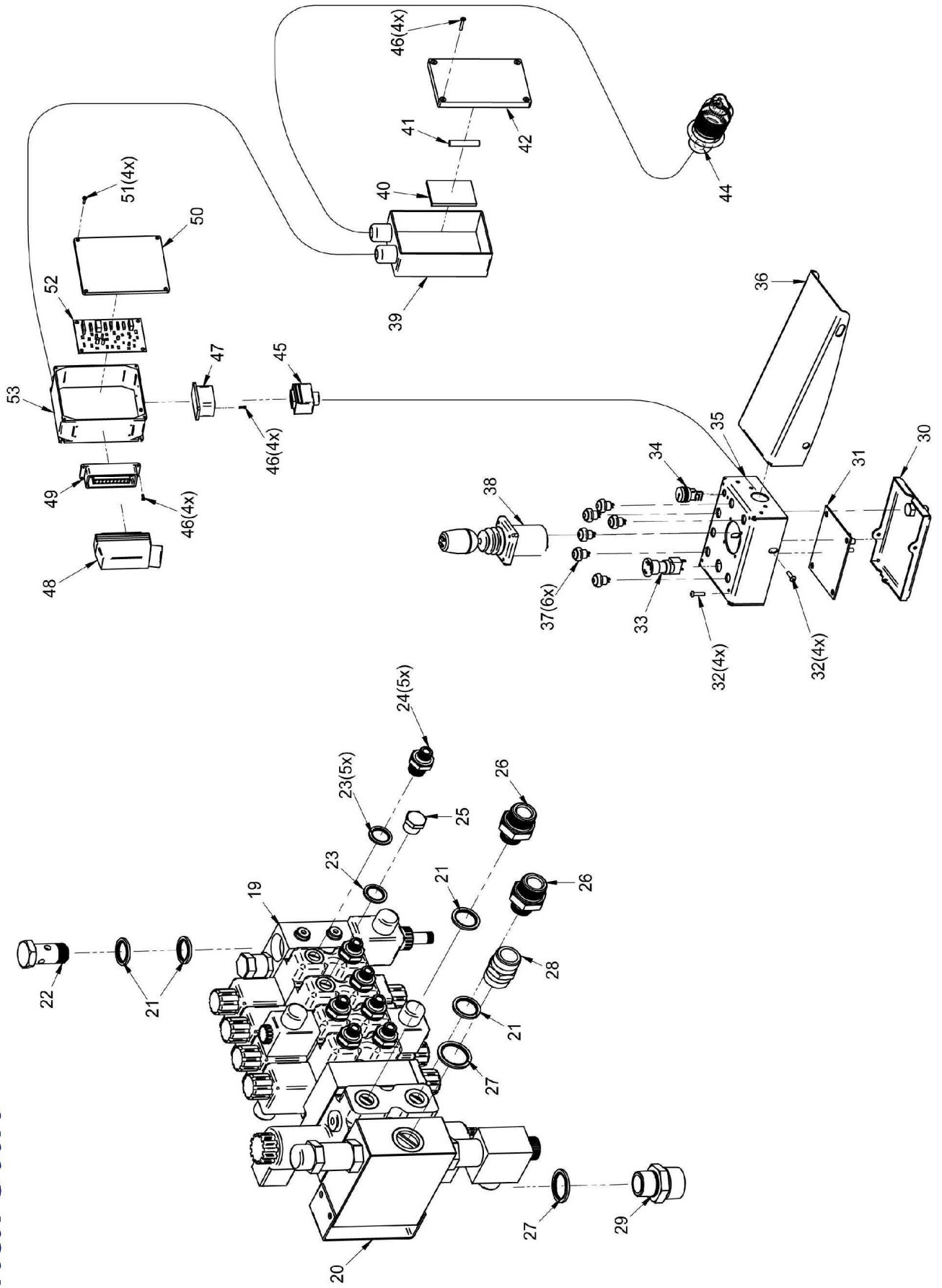


Nr.	Cod.	Q.ty	Denominazione - Denomination - Bezeichnung - Denomination
19	P06-062	1	Distributore - Distributor - Verteiler - Distributeur
20	P07-040	1	Staffa - Stirrup - Steigbügel - étrier
21	P08-029	4	Rondella - Washer - Scheibe - Rondelle
22	P08-026	2	Vite cava - Hollow Screw - Hohlschraube - Vis creuse
23	P08-027	6	Rondella - Washer - Scheibe - Rondelle
24	P08-021	5	Riduzione - Nipple - Nippel - Adapteur
25	P08-054	1	Tappo - Plug - Stecker - Fiche
26	P08-011	2	Riduzione - Nipple - Nippel - Adapteur
27	P08-030	2	Vite cava - Hollow Screw - Hohlschraube - Vis creuse
28	P08-015	1	Riduzione - Nipple - Nippel - Adapteur
29	P08-058	1	Riduzione - Nipple - Nippel - Adapteur
30	P03-036	1	Coperchio - Cover - Abdeckung - Couvercle
31	P03-039	1	Scheda elettronica - Electronic board - Elektronik-Platine - Carte électronique
32	V04-001	8	Vite - Bolt - Schraube - Vis
33	P03-038	1	Emergenza - Emergency - Notfall - Urgence
34	P03-041	1	S.I. System - S.I. System - S.I. System - S.I. System
35	P03-035	1	Scatola - Box - Kasten - Caisse
36	P03-037	1	Appoggio braccio - Arm support - Armauflage - Appui du bras
37	P03-042	6	Pulsante - Button - Taste - Bouton
38	P03-040	1	Joystick - Joystick - Joystick - Joystick
39	P03-082	1	Scatola - Box - Kasten - Caisse
40	P03-084	1	Contatti elettrici - Electrical contacts - Elektrischen Kontakten - Contacts électriques
41	P03-033	1	Fusibile - Fuse - Schmelzsicherung - Fusible
42	P03-081	1	Coperchio - Cover - Abdeckung - Couvercle
43	V03-004	4	Vite - Bolt - Schraube - Vis
44	P03-072	1	Presca - Socket - Buchse - Prise
45	P03-054	1	Connettore - Connector - Connector -Connecteur
46	V03-000	8	Vite - Bolt - Schraube - Vis
47	P03-029	1	Presca - Socket - Buchse - Prise
48	P03-034	1	Connettore - Connector - Connector -Connecteur
49	P03-030	1	Connettore - Connector - Connector -Connecteur
50	P03-079	1	Coperchio - Cover - Abdeckung - Couvercle
51	V04-000	4	Vite - Bolt - Schraube - Vis
52	P03-031	1	Scheda elettronica - Electronic board - Elektronik-Platine - Carte électronique
53	P03-080	1	Scatola - Box - Kasten - Caisse

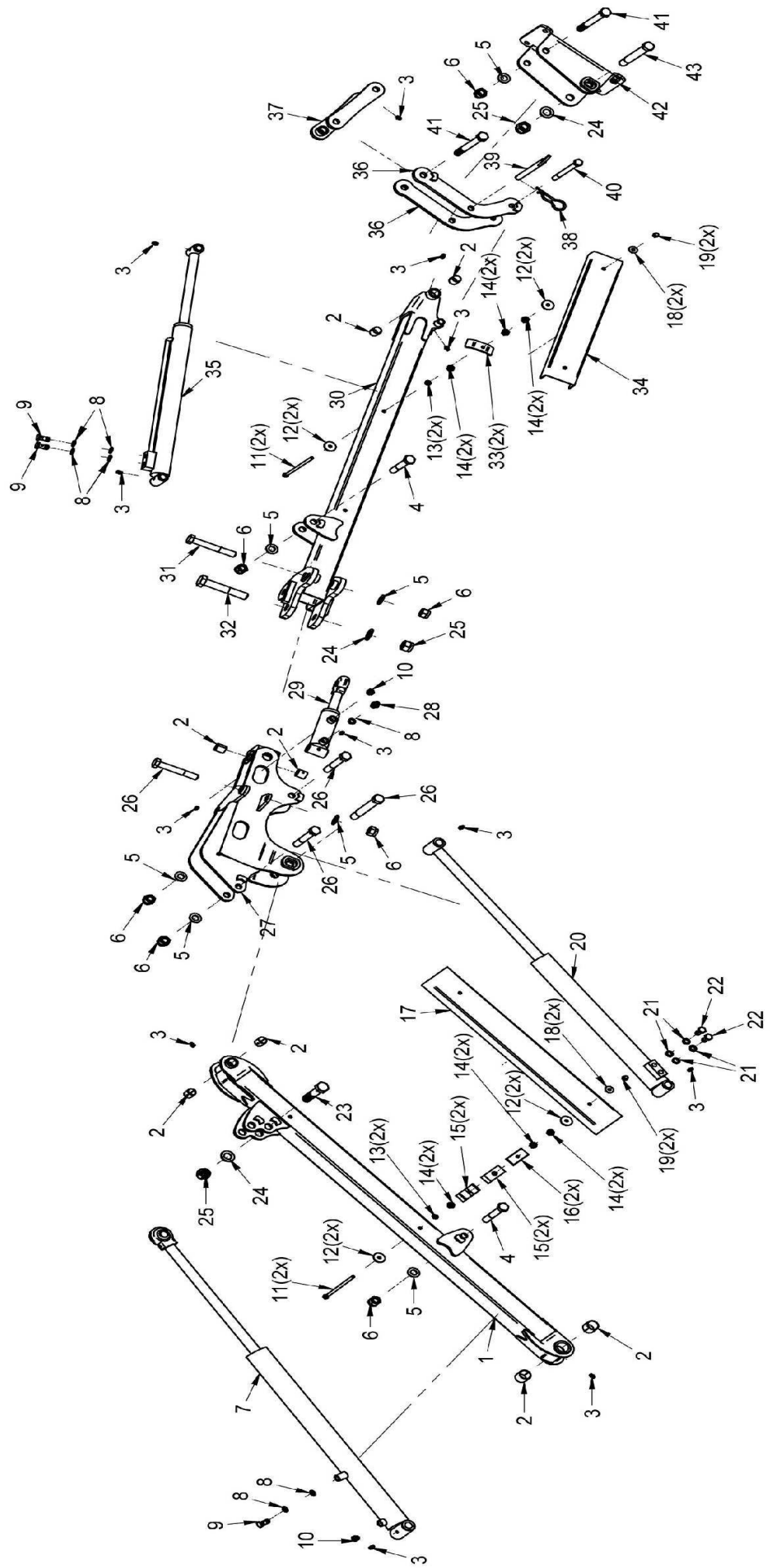




Nr.	Cod.	Q.ty	Denominazione - Denomination - Bezeichnung - Denomination
19	P06-062	1	Distributore - Distributor - Verteiler - Distributeur
20	P07-040	1	Staffa - Stirrup - Steigbügel - étrier
21	P08-029	4	Rondella - Washer - Scheibe - Rondelle
22	P08-026	1	Vite cava - Hollow Screw - Hohlschraube - Vis creuse
23	P08-027	8	Rondella - Washer - Scheibe - Rondelle
24	P08-021	5	Riduzione - Nipple - Nippel - Adapteur
25	P08-054	1	Tappo - Plug - Stecker - Fiche
26	P08-011	2	Riduzione - Nipple - Nippel - Adapteur
27	P08-030	2	Rondella - Washer - Scheibe - Rondelle
28	P08-015	1	Riduzione - Nipple - Nippel - Adapteur
29	P08-058	1	Riduzione - Nipple - Nippel - Adapteur
30	P03-036	1	Coperchio - Cover - Abdeckung - Couvercle
31	P03-039	1	Scheda elettronica - Electronic board - Elektronik-Platine - Carte électronique
32	V04-001	8	Vite - Bolt - Schraube - Vis
33	P03-038	1	Emergenza - Emergency - Notfall - Urgence
34	P03-041	1	S.I. System - S.I. System - S.I. System - S.I. System
35	P03-035	1	Scatola - Box - Kasten - Caisse
36	P03-037	1	Appoggio braccio - Arm support - Armauflage - Appui du bras
37	P03-042	6	Pulsante - Button - Taste - Bouton
38	P03-040	1	Joystick - Joystick - Joystick - Joystick
39	P03-082	1	Scatola - Box - Kasten - Caisse
40	P03-084	1	Contatti elettrici - Electrical contacts - Elektrischen Kontakten - Contacts électriques
41	P03-033	1	Fusibile - Fuse - Schmelzsicherung - Fusible
42	P03-081	1	Coperchio - Cover - Abdeckung - Couvercle
43	V03-004	4	Vite - Bolt - Schraube - Vis
44	P03-072	1	Presca - Socket - Buchse - Prise
45	P03-054	1	Connettore - Connector - Connector -Connecteur
46	V03-000	8	Vite - Bolt - Schraube - Vis
47	P03-029	1	Presca - Socket - Buchse - Prise
48	P03-034	1	Connettore - Connector - Connector -Connecteur
49	P03-030	1	Connettore - Connector - Connector -Connecteur
50	P03-079	1	Coperchio - Cover - Abdeckung - Couvercle
51	V04-000	4	Vite - Bolt - Schraube - Vis
52	P03-031	1	Scheda elettronica - Electronic board - Elektronik-Platine - Carte électronique
53	P03-080	1	Scatola - Box - Kasten - Caisse

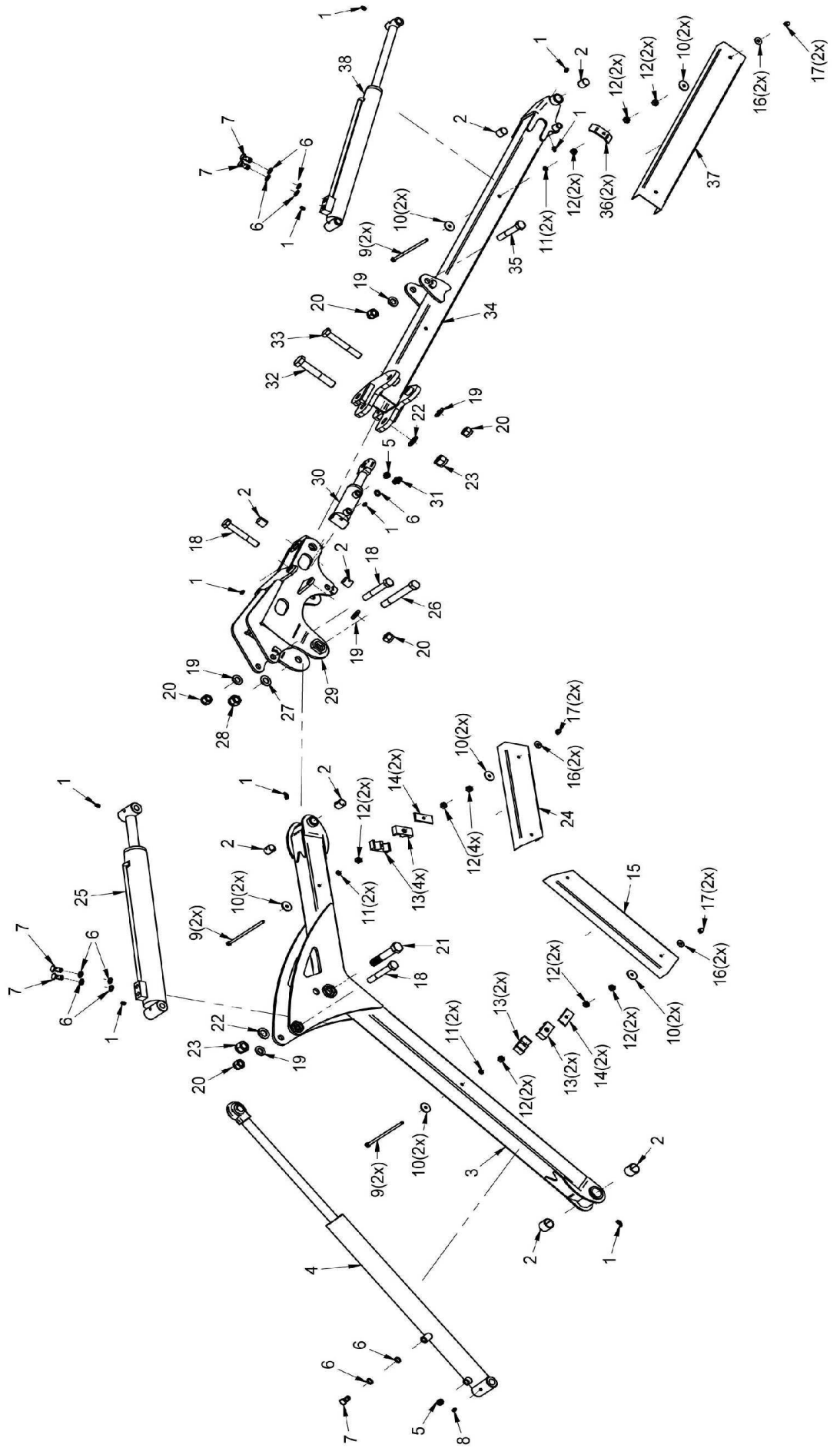


Nr.	Cod.	Q.ty	Denominazione - Denomination - Bezeichnung - Denomination
19	P06-061	1	Distributore - Distributor - Verteiler - Distributeur
20	P07-040	1	Staffa - Stirrup - Steigbügel - étrier
21	P08-029	4	Rondella - Washer - Scheibe - Rondelle
22	P08-026	1	Vite cava - Hollow Screw - Hohlschraube - Vis creuse
23	P08-027	10	Rondella - Washer - Scheibe - Rondelle
24	P08-021	7	Riduzione - Nipple - Nippel - Adapteur
25	P08-054	1	Tappo - Plug - Stecker - Fiche
26	P08-011	2	Riduzione - Nipple - Nippel - Adapteur
27	P08-030	2	Rondella - Washer - Scheibe - Rondelle
28	P08-015	1	Riduzione - Nipple - Nippel - Adapteur
29	P08-058	1	Riduzione - Nipple - Nippel - Adapteur
30	P03-036	1	Coperchio - Cover - Abdeckung - Couvercle
31	P03-039	1	Scheda elettronica - Electronic board - Elektronik-Platine - Carte électronique
32	V04-001	8	Vite - Bolt - Schraube - Vis
33	P03-038	1	Emergenza - Emergency - Notfall - Urgence
34	P03-041	1	S.I. System - S.I. System - S.I. System - S.I. System
35	P03-035	1	Scatola - Box - Kasten - Caisse
36	P03-037	1	Appoggio braccio - Arm support - Armauflage - Appui du bras
37	P03-042	6	Pulsante - Button - Taste - Bouton
38	P03-040	1	Joystick - Joystick - Joystick - Joystick
39	P03-082	1	Scatola - Box - Kasten - Caisse
40	P03-084	1	Contatti elettrici - Electrical contacts - Elektrischen Kontakten - Contacts électriques
41	P03-033	1	Fusibile - Fuse - Schmelzsicherung - Fusible
42	P03-081	1	Coperchio - Cover - Abdeckung - Couvercle
43	V03-004	4	Vite - Bolt - Schraube - Vis
44	P03-072	1	Presca - Socket - Buchse - Prise
45	P03-054	1	Connettore - Connector - Connector - Connecteur
46	V03-000	8	Vite - Bolt - Schraube - Vis
47	P03-029	1	Presca - Socket - Buchse - Prise
48	P03-034	1	Connettore - Connector - Connector - Connecteur
49	P03-030	1	Connettore - Connector - Connector - Connecteur
50	P03-079	1	Coperchio - Cover - Abdeckung - Couvercle
51	V04-000	4	Vite - Bolt - Schraube - Vis
52	P03-031	1	Scheda elettronica - Electronic board - Elektronik-Platine - Carte électronique
53	P03-080	1	Scatola - Box - Kasten - Caisse

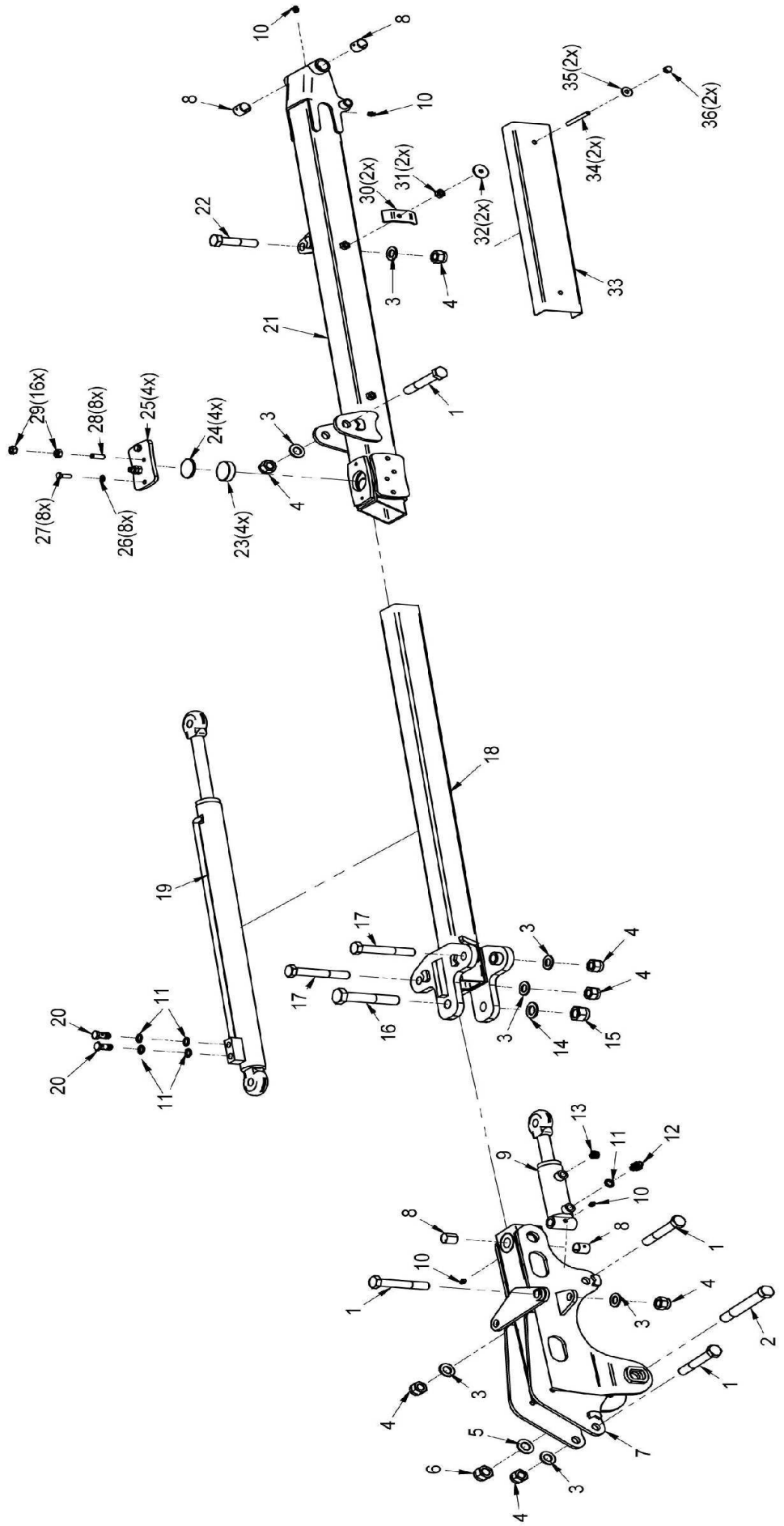




Nr.	Cod.	Q.ty	Denominazione - Denomination - Bezeichnung - Denomination
1	MT02-071	1	1°Braccio - 1 <sup>st</sup> Arm - 1.Arm - 1°Bras [M300]
	MT02-072	1	1°Braccio - 1 <sup>st</sup> Arm - 1.Arm - 1°Bras [M380]
2	P02-128	8	Boccola - Bushing - Buchse - Bague
3	P08-039	12	Ingrassatore - Grease nipple - Schmiernippel - Graisseur
4	V18-005	2	Vite - Bolt - Schraube - Vis
5	V18-001	7	Rondella - Washer - Scheibe - Rondelle
6	V18-003	7	Dado - Nut - Mutter - Ecrou
7	P06-103	1	Cilindro - Cylinder - Zylinder - Cylindre
	P04-016	1	Guarnizione - Gasket - Dichtung - Joint
8	P08-028	11	Rondella - Washer - Scheibe - Rondelle
9	P08-098	3	Vite con sfiato - Screw with breather - Schraube mit Verschnaufpause - Vis avec reniflard
10	P08-016	2	Sfiato olio - Oil breather - Ölentlüftung - Évent d'huile
11	V08-016	4	Vite - Bolt - Schraube - Vis
12	V08-014	8	Rondella - Washer - Scheibe - Rondelle
13	V08-001	4	Rondella - Washer - Scheibe - Rondelle
14	V08-010	12	Dado - Nut - Mutter - Ecrou
15	P08-045	4	Collare - Anchor pipe - Schlauchschelle - Plate fixe tube
16	P08-046	2	Piastra - Plate - Platte - Plate
17	MT02-006	1	Carte tubi - Pipe casing - Abdeckungen Leitungen - Carter tubes
18	V08-002	4	Rondella - Washer - Scheibe - Rondelle
19	V08-015	4	Dado - Nut - Mutter - Ecrou
20	P06-104	1	Cilindro - Cylinder - Zylinder - Cylindre
	P04-017	1	Guarnizione - Gasket - Dichtung - Joint
21	P08-028	4	Rondella - Washer - Scheibe - Rondelle
22	P08-032	2	Vite cava - Hollow Screw - Hohlschraube - Vis creuse
23	V22-014	1	Vite - Bolt - Schraube - Vis
24	V22-003	3	Rondella - Washer - Scheibe - Rondelle
25	V22-008	3	Dado - Nut - Mutter - Ecrou
26	P03-255	4	Spina - Pin - Stift - Fiche
27	MT02-143	1	Giunzione - Junction - Kreuzung - De jonction
28	P08-019	1	Nipplo - Nipple - Nippel - Niplo
29	P06-037	1	Cilindro - Cylinder - Zylinder - Cylindre
	P04-018	1	Guarnizione - Gasket - Dichtung - Joint
30	MT02-076	1	2°Braccio - 2 <sup>st</sup> Arm - 2.Arm - 2°Bras [M300]
	MT02-151	1	2°Braccio - 2 <sup>st</sup> Arm - 2.Arm - 2°Bras [M380]
31	V18-006	1	Vite - Bolt - Schraube - Vis
32	V22-007	1	Vite - Bolt - Schraube - Vis
33	P08-072	1	Collare - Anchor pipe - Schlauchschelle - Plate fixe tube
34	MT02-104	1	Carte tubi - Pipe casing - Abdeckungen Leitungen - Carter tubes
35	P06-039	1	Cilindro - Cylinder - Zylinder - Cylindre
	P04-019	1	Guarnizione - Gasket - Dichtung - Joint
36	MT02-012	2	Parallelo - Parallel piece - Parallelgestänge - Parallèle
37	MT02-152	1	Parallelo - Parallel piece - Parallelgestänge - Parallèle
38	P08-014	1	Copiglia - Split pin - Splint - Goupille
39	P03-012	1	Spina - Pin - Stift - Fiche
40	V14-008	1	Vite - Bolt - Schraube - Vis
41	V18-010	2	Vite - Bolt - Schraube - Vis
42	MT02-011	1	Attacco - Linkage - Anschluss - Attelage
43	P03-257	1	Spina - Pin - Stift - Fiche

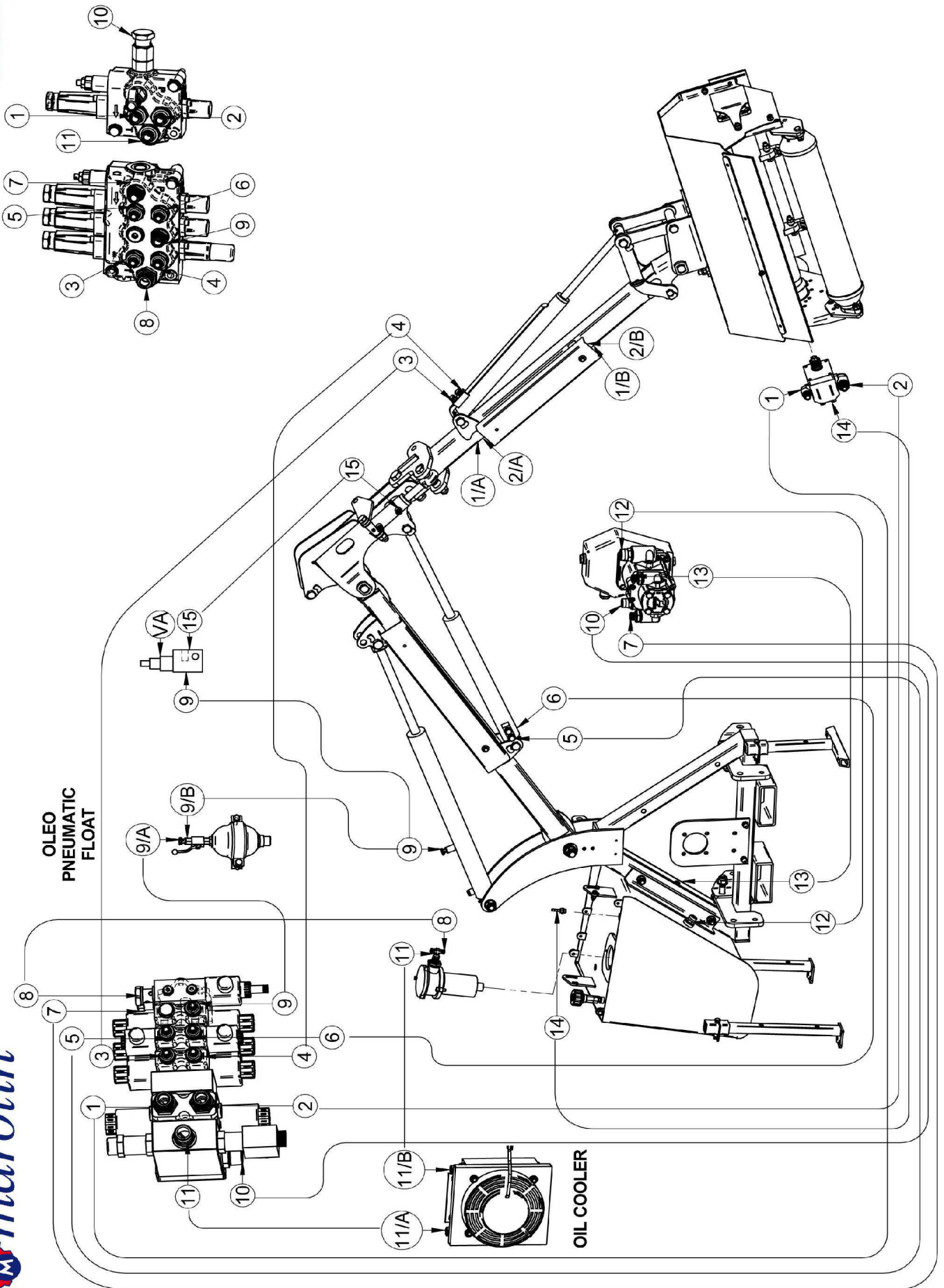


Nr.	Cod.	Q.ty	Denominazione - Denomination - Bezeichnung - Denomination
1	P08-040	10	Ingrassatore - Grease nipple - Schmiernippel - Graisseur
2	P02-128	8	Boccola - Bushing - Buchse - Bague
3	MT02-073	1	1°Braccio - 1 <sup>st</sup> Arm - 1.Arm - 1°Bras
4	P06-103	1	Cilindro - Cylinder - Zylinder - Cylindre
	P04-016	1	Guarnizione - Gasket - Dichtung - Joint
5	P08-016	2	Sfiato olio - Oil breather - Ölentlüftung - Évent d'huile
6	P08-028	11	Rondella - Washer - Scheibe - Rondelle
7	P08-098	5	Vite con sfiato - Screw with breather - Schraube mit Verschnaufpause - Vis avec reniflard
8	P08-039	1	Ingrassatore - Grease nipple - Schmiernippel - Graisseur
9	V08-016	6	Vite - Bolt - Schraube - Vis
10	V08-014	12	Rondella - Washer - Scheibe - Rondelle
11	V08-001	6	Rondella - Washer - Scheibe - Rondelle
12	V08-010	18	Dado - Nut - Mutter - Ecrou
13	P08-045	8	Collare - Anchor pipe - Schlauchschelle - Plate fixe tube
14	P08-046	4	Piastra - Plate - Platte - Plate
15	MT02-044	1	Carter tubi - Pipe casing - Abdeckungen Leitungen - Carter tubes
16	V08-002	6	Rondella - Washer - Scheibe - Rondelle
17	V08-015	6	Dado - Nut - Mutter - Ecrou
18	V18-008	3	Vite - Bolt - Schraube - Vis
19	V18-001	5	Rondella - Washer - Scheibe - Rondelle
20	V18-003	5	Dado - Nut - Mutter - Ecrou
21	V22-015	1	Vite - Bolt - Schraube - Vis
22	V22-003	2	Rondella - Washer - Scheibe - Rondelle
23	V22-004	2	Dado - Nut - Mutter - Ecrou
24	MT02-160	1	Carter tubi - Pipe casing - Abdeckungen Leitungen - Carter tubes
25	P06-105	1	Cilindro - Cylinder - Zylinder - Cylindre
	P04-020	1	Guarnizione - Gasket - Dichtung - Joint
26	P03-255	1	Spina - Pin - Stift - Fiche
27	V20-001	1	Rondella - Washer - Scheibe - Rondelle
28	V20-002	1	Dado - Nut - Mutter - Ecrou
29	MT02-143	1	Giunzione - Junction - Kreuzung - De jonction
30	P06-037	1	Cilindro - Cylinder - Zylinder - Cylindre
	P04-018	1	Guarnizione - Gasket - Dichtung - Joint
31	P08-019	1	Nipplo - Nipple - Nippel - Niplo
32	V22-007	1	Vite - Bolt - Schraube - Vis
33	V18-006	1	Vite - Bolt - Schraube - Vis
34	MT02-151	1	2°Braccio - 2 <sup>st</sup> Arm - 2.Arm - 2°Bras
35	V18-005	1	Vite - Bolt - Schraube - Vis
36	P08-072	1	Collare - Anchor pipe - Schlauchschelle - Plate fixe tube
37	MT02-156	1	Carter tubi - Pipe casing - Abdeckungen Leitungen - Carter tubes
38	P06-039	1	Cilindro - Cylinder - Zylinder - Cylindre
39	P04-019	1	Guarnizione - Gasket - Dichtung - Joint

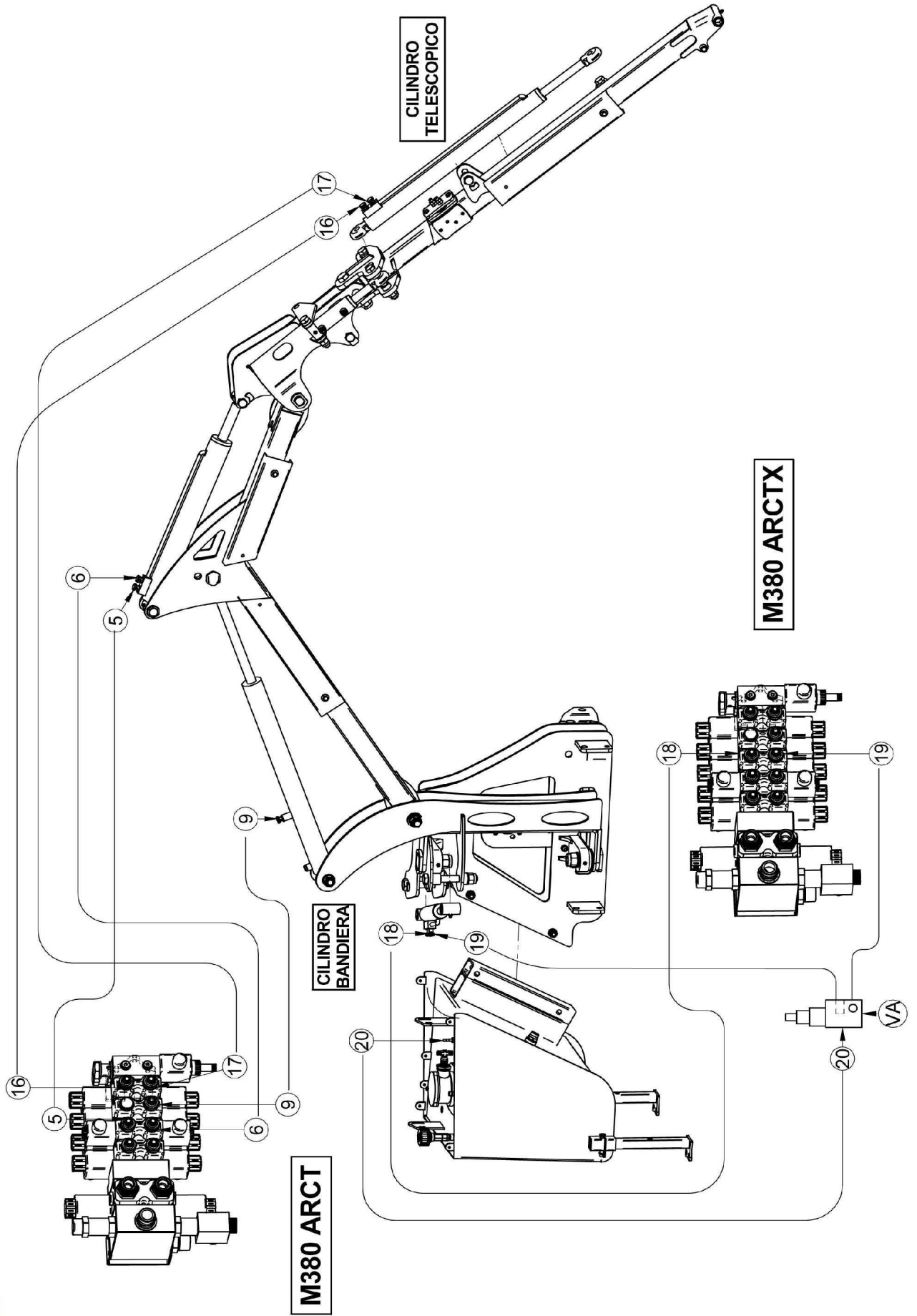


Nr.	Cod.	Q.ty	Denominazione - Denomination - Bezeichnung - Denomination
1	V18-008	4	Vite - Bolt - Schraube - Vis
2	P03-255	1	Spina - Pin - Stift - Fiche
3	V18-001	7	Rondella - Washer - Scheibe - Rondelle
4	V18-003	7	Dado - Nut - Mutter - Erou
5	V20-001	1	Rondella - Washer - Scheibe - Rondelle
6	V20-002	1	Dado - Nut - Mutter - Erou
7	MT02-143	1	Giunzione - Junction - Kreuzung - De jonction
8	P02-005	4	Boccola - Bushing - Buchse - Bague
9	P06-037	1	Cilindro - Cylinder - Zylinder - Cylindre
10	P08-039	4	Ingrassatore - Grease nipple - Schmiernippel - Graisseur
11	P08-028	5	Rondella - Washer - Scheibe - Rondelle
12	P08-019	1	Nipplo - Nipple - Nippel - Niplo
13	P08-016	1	Sfiato olio - Oil breather - Ölentlüftung - Évent d'huile
14	V22-003	1	Rondella - Washer - Scheibe - Rondelle
15	V22-004	1	Dado - Nut - Mutter - Erou
16	V22-007	1	Vite - Bolt - Schraube - Vis
17	V18-006	2	Vite - Bolt - Schraube - Vis
18	MT02-144	1	2°Braccio - 2 <sup>nd</sup> Arm - 2.Arm - 2°Bras
19	P06-106	1	Cilindro - Cylinder - Zylinder - Cylindre
	P04-021	1	Guarnizione - Gasket - Dichtung - Joint
20	P08-032	2	Vite cava - Hollow Screw - Hohlschraube - Vis creuse
21	MT02-145	1	Braccio estensibile - Extendable arm - ausfahrbaren Arm - Bras extensible
22	V18-007	1	Vite - Bolt - Schraube - Vis
23	P03-233	4	Tampone - Pad - Stopfen - Tampon
24	P03-182	4	Rondella - Washer - Scheibe - Rondelle
25	MT130	4	Premi tampone - Awards buffer - Auszeichnungen Puffer - Prix tampon
26	V08-001	8	Rondella - Washer - Scheibe - Rondelle
27	V08-004	8	Vite - Bolt - Schraube - Vis
28	V10-015	8	Vite - Bolt - Schraube - Vis
29	V10-004	16	Dado - Nut - Mutter - Erou
30	P08-072	2	Collare - Anchor pipe - Schlauchschelle - Plate fixe tube
31	V08-010	2	Dado - Nut - Mutter - Erou
32	V08-014	2	Rondella - Washer - Scheibe - Rondelle
33	MT02-104	1	Carte tubi - Pipe casing - Abdeckungen Leitungen - Carter tubes
34	V08-031	2	Vite - Bolt - Schraube - Vis
35	V08-002	2	Rondella - Washer - Scheibe - Rondelle
36	V08-015	2	Dado - Nut - Mutter - Erou





Nr.	Cod.	Q.ty	Denominazione - Denomination - Bezeichnung - Denomination
1, 1/A - 2, 2/A	P09-186	1	Tubo - Pipe - Schlauch - Tuyau [M300-M380]
	P09-204	1	Tubo - Pipe - Schlauch - Tuyau [M380ARC]
	P09-208	1	Tubo - Pipe - Schlauch - Tuyau [M300ARCT]
	P09-215	1	Tubo - Pipe - Schlauch - Tuyau [M300ARCTX]
1/B, 1	P09-187	1	Tubo - Pipe - Schlauch - Tuyau [M300-M380-M380ARC]
	P09-209	1	Tubo - Pipe - Schlauch - Tuyau [M300ARCT-M380ARCTX]
2/B, 2	P09-188	1	Tubo - Pipe - Schlauch - Tuyau [M300-M380-M380ARC]
	P09-210	1	Tubo - Pipe - Schlauch - Tuyau [M300ARCT-M380ARCTX]
3, 4	P09-189	1	Tubo - Pipe - Schlauch - Tuyau [M300]
	P09-202	1	Tubo - Pipe - Schlauch - Tuyau [M380]
	P09-205	1	Tubo - Pipe - Schlauch - Tuyau [M380ARC]
	P09-211	1	Tubo - Pipe - Schlauch - Tuyau [M380ARCT]
	P09-216	1	Tubo - Pipe - Schlauch - Tuyau [M300ARCTX]
5, 6	P09-190	1	Tubo - Pipe - Schlauch - Tuyau [M300]
	P09-203	1	Tubo - Pipe - Schlauch - Tuyau [M380]
	P09-206	1	Tubo - Pipe - Schlauch - Tuyau [M380ARC-M380ARCT]
	P09-217	1	Tubo - Pipe - Schlauch - Tuyau [M300ARCTX]
7	P09-191	1	Tubo - Pipe - Schlauch - Tuyau [M300-M380-M380ARC-M380ARCT]
	P09-218	1	Tubo - Pipe - Schlauch - Tuyau [M380ARCTX]
8	P09-192	1	Tubo - Pipe - Schlauch - Tuyau [M300-M380-M380ARC-M380ARCT-M380ARCTX]
9	P09-193	1	Tubo - Pipe - Schlauch - Tuyau [M300-M380-M380ARC-M380ARCT]
	P09-219	1	Tubo - Pipe - Schlauch - Tuyau [M380ARCTX]
9, VA	P09-198	1	Tubo - Pipe - Schlauch - Tuyau [M300-M380-M380ARC-M380ARCT]
	P09-220	1	Tubo - Pipe - Schlauch - Tuyau [M380ARCTX]
9, 9/A	P09-234	1	Tubo - Pipe - Schlauch - Tuyau [M300-M380-M380ARC-M380ARCT-M380ARCTX]
9/B, 9	P09-235	1	Tubo - Pipe - Schlauch - Tuyau [M300-M380-M380ARC-M380ARCT-M380ARCTX]
10	P09-194	1	Tubo - Pipe - Schlauch - Tuyau [M300-M380-M380ARC]
	P09-212	1	Tubo - Pipe - Schlauch - Tuyau [M300ARCT]
	P09-221	1	Tubo - Pipe - Schlauch - Tuyau [M300ARCTX]
11	P09-195	1	Tubo - Pipe - Schlauch - Tuyau [M300-M380-M380ARC-M380ARCT-M380ARCTX]
11, 11/A	P09-200	1	Tubo - Pipe - Schlauch - Tuyau [M300-M380-M380ARC-M380ARCT]
	P09-222	1	Tubo - Pipe - Schlauch - Tuyau [M380ARCTX]
11, 11/B	P09-201	1	Tubo - Pipe - Schlauch - Tuyau [M300-M380-M380ARC-M380ARCT]
	P09-223	1	Tubo - Pipe - Schlauch - Tuyau [M380ARCTX]





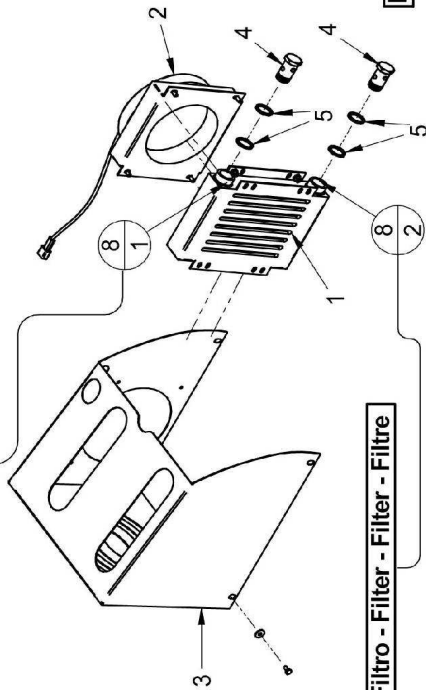
**IMPIANTO IDRAULICO -  
 HIDRAULIC SYSTEM-  
 HYDRAULIKANLAGE-  
 INSTALLATION  
 HIDRAULIQUE**

**Tav. 05**

Nr.	Cod.	Q.ty	Denominazione - Denomination - Bezeichnung - Denomination
12	P09-196	1	Tubo - Pipe - Schlauch - Tuyau [M300-M380-M380ARC-M380ARCT]
	P09-224	1	Tubo - Pipe - Schlauch - Tuyau [M380ARCTX]
13	P09-197	1	Tubo - Pipe - Schlauch - Tuyau [M300-M380-M380ARC-M380ARCT]
	P09-225	1	Tubo - Pipe - Schlauch - Tuyau [M380ARCTX]
14	P09-230	1	Tubo - Pipe - Schlauch - Tuyau [M300]
	P09-231	1	Tubo - Pipe - Schlauch - Tuyau [M380]
	P09-232	1	Tubo - Pipe - Schlauch - Tuyau [M380ARC]
	P09-233	1	Tubo - Pipe - Schlauch - Tuyau [M380ARCT-M380ARCTX]
15 , VA	P09-199	1	Tubo - Pipe - Schlauch - Tuyau [M300-M380]
	P09-207	1	Tubo - Pipe - Schlauch - Tuyau [M380ARC]
	P09-213	1	Tubo - Pipe - Schlauch - Tuyau [M380ARCT]
	P09-226	1	Tubo - Pipe - Schlauch - Tuyau [M380ARCTX]
16 , 17	P09-214	1	Tubo - Pipe - Schlauch - Tuyau [M380ARCT]
	P09-227	1	Tubo - Pipe - Schlauch - Tuyau [M380ARCTX]
18 , 19	P09-228	1	Tubo - Pipe - Schlauch - Tuyau [M380ARCTX]
20 , VA	P09-229	1	Tubo - Pipe - Schlauch - Tuyau [M380ARCTX]

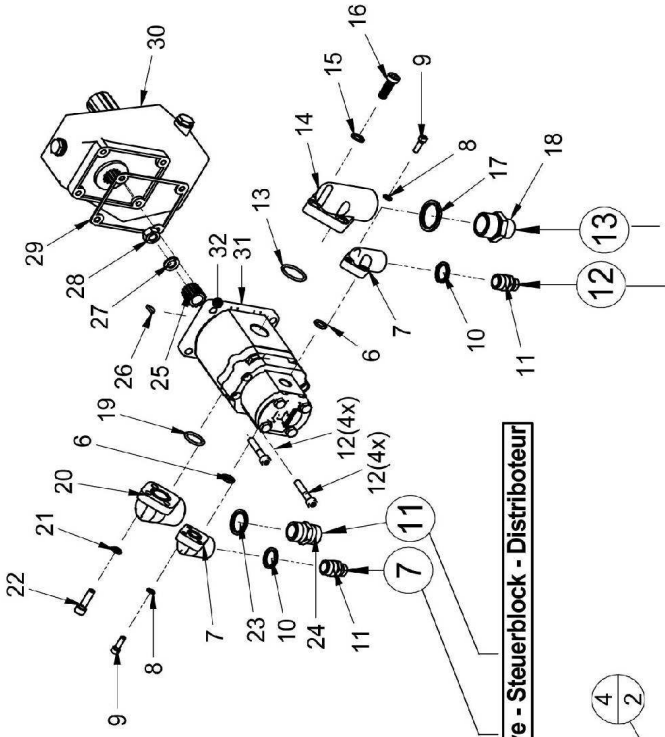


Distributore - Control valve - Steuerblock - Distributeur



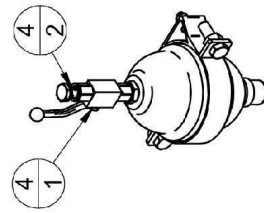
Filtro - Filter - Filtre

Nr.	Cod.	Q.ty	Denominazione - Denomination - Bezeichnung - Denomination
1	P03-024	1	Ventola - Fan - Ventilateur
2	P03-023	1	Scambiatore calore - Oil cooler - Ölkuhler - Refroidisseur d'huile
3	MT02-062	1	Cofano - Tank lid - Tankdeckel - Couverture du réservoir
4	P08-035	2	Vite cava - Hollow Screw - Hohlsschraube - Vis creuse
5	P08-031	4	Rondella - Washer - Scheibe - Rondelle
6	P08-000	2	Guarnizione - Gasket - Dichtung - Joint
7	P08-005	2	Flangia - Flange - Flansch - Flaque
8	V06-005	6	Rondella - Washer - Scheibe - Rondelle
9	V06-004	6	Vite - Bolt - Schraube - Vis
10	P08-029	2	Rondella - Washer - Scheibe - Rondelle
11	P08-020	2	Riduzione - Nipple - Nippel - Adaptateur
12	V08-008	8	Vite - Bolt - Schraube - Vis
13	P08-057	1	Guarnizione - Gasket - Dichtung - Joint
14	P08-056	1	Flangia - Flange - Flansch - Flaque
15	V10-009	3	Rondella - Washer - Scheibe - Rondelle
16	V10-010	3	Vite - Bolt - Schraube - Vis
17	P08-031	1	Rondella - Washer - Scheibe - Rondelle
18	P08-058	1	Riduzione - Nipple - Nippel - Adaptateur
19	P08-001	1	Guarnizione - Gasket - Dichtung - Joint
20	P08-004	1	Flangia - Flange - Flansch - Flaque
21	V08-011	3	Rondella - Washer - Scheibe - Rondelle
22	V12-006	3	Vite - Bolt - Schraube - Vis
23	P08-030	1	Rondella - Washer - Scheibe - Rondelle
24	P08-015	1	Nippolo - Nipple - Nippel - Niplo
25	P03-061	1	Ingranaggio - Gear - Zahnmad - Engrenages
26	P08-007	1	Linguetta - Tongue - Keil - Clavette
27	V12-009	1	Giunzione - Junction - Kreuzung - De jonction
28	V12-003	1	Dado - Nut - Mutter - Ecrou
29	P08-053	1	Guarnizione - Gasket - Dichtung - Joint
30	P03-069	1	Moltiplicatore - Gear box - Getriebe - Multiplicateur
31	P03-068	1	Pompa - Pump - Pumpe - Pompe
32		1	Kit Anello di tenuta - Seal Kit - Dichtung Kit - Kit Garniture
33	P06-021	1	Kit Sospensione Oleopneumatica del 1° Braccio



Distributore - Control valve - Steuerblock - Distributeur

Serbatoio olio - Oiltank - Öltank - Réservoir d'huile

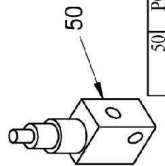


OLEO PNEUMATIC FLOAT

COLLEGAMENTI SCAMBIATORE e POMPA

4, 4/1	P09-015	1	Tubo - Pipe - Schlauch - Tuyau
4, 4/2	P09-016	1	Tubo - Pipe - Schlauch - Tuyau
8/1	P09-013	1	Tubo - Pipe - Schlauch - Tuyau
8/2	P09-014	1	Tubo - Pipe - Schlauch - Tuyau
7	P09-011	1	Tubo - Pipe - Schlauch - Tuyau
11	P09-004	1	Tubo - Pipe - Schlauch - Tuyau
12	P09-000	1	Tubo - Pipe - Schlauch - Tuyau
13	P09-009	1	Tubo - Pipe - Schlauch - Tuyau

SAFETY VALVE



50	P03-116	1	Valvola - Valve - Ventil - Vanne
----	---------	---	----------------------------------